

# property auction

preview of 23 lots of  
particular interest to  
South West investors

**Thursday 3 April 2025**  
12 noon prompt

Registration closes promptly at  
12pm on **Wednesday 2 April**  
and you must be pre-registered  
before this time in order to bid

**Please note this auction will be streamed live online only**

  
**Countrywide**  
Property Auctions

**SuttonKersh**

[www.countrywidepropertyauctions.co.uk](http://www.countrywidepropertyauctions.co.uk)

# Welcome



Welcome to our second auction of our 2025 series, which will be hosted live streamed online with auctioneer Andrew Binstock on the rostrum.

On offer in our April auction, we have something for absolutely everybody that is looking to

purchase land or property throughout Devon and Cornwall. We have a wide selection of refurbishment projects – coastal, city centre and moorland locations; high-yielding residential investment opportunities; low maintenance car parking facilities with additional income potential; mixed commercial/residential properties; and just one of the nicest parcels of traditional Cornish woodland that I have seen in a long time!

Please remember that registration to bid by telephone, proxy or via the internet closes 24 hours prior to the auction and you do need to be fully registered by that point. As always, should you require any assistance with registration, please do call us and we will be more than happy to assist you.

Our in-house Countrywide network of estate agents will be more than happy to facilitate viewings of the lots on offer and the legal packs for all lots can be downloaded free of charge from our website [www.propertyauctionsouthwest.co.uk](http://www.propertyauctionsouthwest.co.uk)

We are now inviting early entries for our May 2025 catalogue, so if you would like a free, no obligation, auction appraisal on your property then please do send us an email [auctions@countrywide.co.uk](mailto:auctions@countrywide.co.uk) or call us on 01395 275691.

Kindest regards & happy bidding!

**Wendy Alexander ANAVA**

Head of South West Property Auctions  
[wendy.alexander@countrywide.co.uk](mailto:wendy.alexander@countrywide.co.uk)

Countrywide Property Auctions is a trading name of Countrywide Estate Agents Limited, Registered in England Number 00789476.  
Registered Office Cumbria House, 16–20 Hockliffe Street, Leighton Buzzard, Bedfordshire, LU7 1GN.

# 110

 lots available

## 60+

vacant  
residential

## 2

commercial  
investment

## 7

mixed  
use

## 20+

residential  
investment

## 3

land

## 2

vacant  
commercial

### Highlights



Car Parking Spaces, Central Car Park, Polperro PL13 2QR



12 Foundry Flats, Foundry Square, Hayle TR27 4AE



1 Grenville Park, Stamford Hill, Stratton, Bude EX23 9AY



2 Trevithick Cottages, Buryas Bridge, Penzance TR19 6AE



7 Brook Terrace, Horrabridge, Yelverton, Devon PL20 7QU



Land at Bowl Rock, Lelant, St. Ives, Cornwall TR26 3JE

# Remote bidding guide for live streamed closed door auction

---

For the foreseeable future our auctions will be held online with a live auctioneer conducting the proceedings.

We offer three ways to bid at our auction:

1. **Telephone Bidding** A member of the auctions team will telephone you shortly before the lot is offered in the auction room and bid on your behalf subject to your specific instructions.
2. **Proxy Bidding** You authorise the auctioneer to bid on your behalf in line with the bidding in the auction room up to your specified maximum amount.
3. **Internet Bidding** You can bid remotely by using our internet bidding service. Upon successful registration you will be given permission to access the online bidding system. On the day of the auction please follow the auction 'live' (by clicking the link from the relevant auction page on our website) and place your bids accordingly.

To register to bid at the auction you simply have to complete the following steps. Registration closes 24 hours before the start of the auction.

1. **Create an account** Creating an account makes it the easiest way to register and bid at our auction.
2. **Complete identity check** We will require you to pass our verification process and will automatically send you a link to our partners Credas in order for you to complete the check via their app on your phone or tablet. See our Anti-Money Laundering Regulations guide towards the rear of this catalogue.
3. **Complete the bidding form and agree to terms and conditions** You can bid on multiple lots but we do require one form per lot.
4. **Submit your payment** We will require valid debit card details prior to you being able to bid and will contact you in advance of the auction by telephone to obtain these details.

If you are the successful bidder you will be legally bound to pay a 10% deposit subject to a minimum of £3,000, whichever is the greater.

You will also pay a Buyer's Administration Charge, to the auctioneers of 1.35% of the purchase price plus VAT subject to a minimum fee of £1,800 plus VAT (unless otherwise stated in the property description in the catalogue). Payments can be made by debit card or bank transfer.

5. **Confirmation** You are ready to bid.

If your bid is successful, we will take payment, sign the memorandum of sale on your behalf and send the contract to both party's solicitors ready for completion.

If your bid is unsuccessful, we will destroy your card details or refund your payment to the account detailed on your bidding form.

# Terms & conditions for proxy, telephone or internet bidders

The following terms and conditions apply to all intended buyers who wish bids to be made by proxy, telephone or internet

1. A proxy/telephone/internet form must be used to submit your bid to the auctioneers 48 hours before the day of the auction. This bid will not be called upon prior to the time of offering the particular lot for which the bid has been made.  
  
A prospective buyer should fill in the appropriate proxy, telephone or internet bidding form in the catalogue or on the auctioneers website and should ensure that all sections are completed. Failure to complete any part of the appropriate form may render the instructions ineffective.  
  
**Telephone bidding** A member of staff will attempt to contact the bidder by telephone prior to the lot concerned being offered for sale. If contact is made then the bidder may compete in the bidding through the auctioneer's staff. If it is impossible to obtain telephone contact, or the link breaks down, the auctioneer is authorised to continue to bid on behalf of the telephone bidder up to the maximum bid stated on the form submitted.  
  
**Internet bidding** Upon successful registration you will be issued with a unique bidding number to access our online bidding system. If connection is made then the bidder may compete in the bidding through the bidding system. If it is impossible to obtain connection or the link breaks down, the auctioneer is authorised to continue to bid on behalf of the internet bidder up to the maximum bid stated on the form submitted.
2. Maximum bids must be for an exact figure and any reference to a bid to be calculated by reference to other bids will not be acceptable. In the event of there being any confusion as to the maximum bid, the auctioneer reserves the right to refuse a bid on behalf of the prospective buyer.
3. All proxy, telephone or internet bidding completed forms must be delivered to the auctioneer not less than 48 hours prior to the start of the auction at which the property, the subject of the bid, is to be sold. All bidders must provide a Bank or Building Society Draft or valid debit card details to cover the sum of 10% of the maximum bid or £3,000 whichever is the greater, and the buyers administration charge, to the auctioneer 48 hours prior to the auction to validate the proxy, telephone or internet bidding form. Proof of funds for a 10% deposit must also be provided. **We will not bid on your behalf or accept your bid unless we hold payment details.** Please note we do not accept cash or cheques.  
  
**Buyer's Administration Charge** The successful buyer will be required to pay the Auctioneers a Buyer's Administration Charge of 1.35% of the purchase price plus VAT subject to a minimum fee of £1,800 plus VAT (unless stated otherwise within the property description in the catalogue) upon exchange of contracts for each property purchased.  
  
A separate proxy, telephone or internet bidding form, deposit and buyer's administration charge should be supplied for each property upon which a bid is to be placed.
4. Any alteration to the proxy, telephone or internet bid or withdrawal must be in writing and be received in writing by the auctioneer prior to commencement of the auction.
5. The auctioneer, in accepting proxy bids, acts as agent for the prospective buyer and the prospective buyer shall be considered to have authorised the auctioneer on the basis of the terms and conditions set out in this auction catalogue, all relevant conditions of sale and any amendments to the auction catalogue. In the event of the prospective buyer's bid being successful, the auctioneer is authorised by the prospective buyer to sign any memorandum or contract relating to the property concerned.
6. The auctioneer accepts no liability for any bid not being made on behalf of the prospective buyer and reserves the right to bid himself or through an agent up to the reserve price for the particular property concerned.
7. The auctioneer accepts no responsibility for failure of telecommunications in respect of a telephone or internet bid, or any delays in the postal system if a proxy bidding form is sent through the post.
8. Prospective bidders should check our website by 10am on the day of the auction and prior to bidding at the auction to ensure there are no changes to the published terms and conditions and to find out whether any addenda apply to the property for which they have authorised the Auctioneer to bid on their behalf.
9. In the case of unsuccessful bidders' deposits, received by us into our clients' account, we will use best endeavours to return these to the originating bank account within 48 hours of the conclusion of the Sale. As part of this process our accounts team will contact you to ensure the funds are returned securely.
10. Should the property be knocked down to the proxy, telephone or internet bidder by the Auctioneer at a figure which is less than the maximum bid price on the form, the whole of the deposit supplied with the form will still be cashed and will count towards the purchase price sold.
11. Should the telephone or internet bid exceed the bidding price stated on the form, the balance of the deposit must be forwarded to the auctioneers promptly. The deposit can be a bank transfer to our client account, bankers draft, solicitors' client account cheque, or by debit card. We do not accept personal cheques or cash.
12. Proxy, telephone or internet bidders are deemed to be making their bid with full knowledge of and in accordance with the Common Auction Conditions, Extra Conditions and Special Conditions of Sale, Addendum and the auctioneers pre-sale announcements and are aware of any additional costs and fees payable by the buyer detailed therein.
13. Proxy, telephone or internet bidders are also deemed to have knowledge of any Addendum sheet which may be issued prior to or at the auction sale. Proxy, telephone or internet bidders are advised to telephone the Auctioneer's offices or check the auctioneers website before 10am on the day of the sale in order to find out whether any addenda apply to the property for which they have authorised the Auctioneer to bid on their behalf.
14. The proxy, telephone or internet bidder authorises the Auctioneer or any duly authorised partner or employee of Sutton Kersh as the prospective purchaser's agent to sign the Memorandum of Sale or Sale Contract incorporating any addendum at or after the auction.
15. Please note we must hold 2 forms of certified ID prior to auction, typically this will be: 1 x Photo ID (Driving Licence or Passport) & Proof of Address (Utility Bill or Bank Statement). If you are the successful purchaser, we will carry out an additional electronic verification check on your identity which will leave a "soft footprint" on your credit history but does not affect your credit score. This will be undertaken by Credas Technologies Ltd.
16. Proxy, telephone or internet bidding forms should be sent to [auctions@suttonkersh.co.uk](mailto:auctions@suttonkersh.co.uk). Your information is being collected and processed by Countrywide. All information will be processed in accordance with the General Data Protection Regulation. Full details of how we process your information can be found on our website [www.countrywide.co.uk/notices/PrivacyNotice.pdf](http://www.countrywide.co.uk/notices/PrivacyNotice.pdf). Print copies of our privacy notice are available on request. If you need to discuss how your information is being processed, please contact us at [privacy@countrywide.co.uk](mailto:privacy@countrywide.co.uk).



# Auctioneer's pre-sale announcements

**You are required to pre-register if you are intending to bid on any lot at auction to comply with money laundering regulations (full details can be found at the rear of the current catalogue). You can pre-register by completing the Bidders Registration and Identification Form – full details of which can be found on our website.**

This catalogue contains details about properties being sold at auction. Those details are subject to change up to and including the day of the auction. Please check our website regularly at [suttonkersh.co.uk](http://suttonkersh.co.uk) and look out for any additional materials available on the day of the auction, in order to stay fully informed with the up to date information.

1. The auctioneer will offer all lots in the order as shown in the catalogue.
2. An addendum to the catalogue and Conditions of Sale are available on our website and legal pack portal.
3. This addendum is an important document providing updates and corrections to the auction catalogue.
4. Sutton Kersh will always endeavour to inform prospective purchasers of changes that may have taken place after the catalogue was printed when such changes are brought to their attention.
5. Would prospective purchasers please ensure they have a copy of the auction catalogue and an addendum prior to bidding.
6. Prospective purchasers are deemed to have read the addendum whether they have done so or not.
7. You are bidding on the basis that you have checked the General Conditions of Sale, which are detailed at the back of the catalogue, and the Special Conditions of Sale relating to each individual lot.
8. The Special Conditions of Sale together with the title documentation have been available for inspection at the auctioneer's office in the immediate period leading up to auction date.
9. You are bidding on the basis that you have made all necessary enquiries, particularly in respect of lots the auctioneer has not inspected or had initial sight of tenancy details, and have checked the General and Special Conditions of Sale and are satisfied that you fully understand their content. Please note that some legal packs may contain additional fees (such as the requirement for the seller to pay the vendor's legal fees).
10. If you have a query in respect of any of the lots within the catalogue please email your enquiry to [auctions@suttonkersh.co.uk](mailto:auctions@suttonkersh.co.uk) or call 0151 207 6315 prior to submitting your bid and we will endeavour to answer your query.
11. Guide Prices shown in the catalogue are merely an approximation and the auctioneer's opinion only. They should not be regarded as anything more. (see definition of Guide Prices below)
12. The auctioneer will not describe each individual property in detail or elaborate on its features or finer points. He will merely state the address, lot number and a very brief description.
13. Please bid clearly if bidding by telephone and do not delay.
14. At the fall of the hammer the successful bidder will be in a binding contract of sale. We will then sign the Memorandum or Contract of Sale on your behalf and a 10% deposit subject to a minimum of £3,000 whichever is the greater will become payable and taken from the funds supplied. Should your telephone/internet bid exceed this amount, the balance of the deposit must be forwarded to the auctioneers promptly. The deposit can be a bank transfer to our client account, bankers draft, solicitor's client account cheque or by debit card. We do not accept personal cheques or cash.
15. A successful purchaser will also be required to pay a Buyer's Administration Charge of 1.35% of the purchase price plus VAT subject to a minimum fee of £1,800 plus VAT (unless stated otherwise within the property description in the catalogue) by debit card or bank transfer.
16. Where a deposit is paid to us as stakeholder we are at liberty to transfer all or part of it prior to completion to the Seller's solicitors (net of any fees and commission that will be due to us from the Seller) for them to hold as stakeholder in our place.
17. Completion of the sale and payment of the balance of the purchase money is 28 days after the auction unless the conditions of sale provide otherwise.
18. Unless otherwise stated all property is sold subject to a reserve price whether declared or not (see definition of Reserve Prices below).
19. Please note that purchasers will not be entitled to keys or access to properties until completion of the sale. If access is required it may be arranged through the auctioneers.
20. Sutton Kersh hold regular property auctions throughout the year.
21. Sutton Kersh operate a substantial dedicated mailing list free of charge to applicants. If you wish to be placed on the mailing list, please give your details to one of our representatives.

## Guide Prices, Reserve Prices and Buyer's Fees

### Guide Price

An indication of the seller's current minimum acceptable price at auction. The guide price or range of guide prices is given to assist consumers in deciding whether or not to pursue a purchase. It is usual, but not always the case, that a provisional reserve range is agreed between the seller and the auctioneer at the start of marketing. As the reserve is not fixed at this stage and can be adjusted by the seller at any time up to the day of the auction in the light of interest shown during the marketing period, a guide price is issued. This guide price can be shown in the form of a minimum and maximum price range within which an acceptable sale price (reserve)

would fall, or as a single price figure within 10% of which the minimum acceptable price (reserve) would fall. A guide price is different to a reserve price (see separate definition). Both the guide price and the reserve price can be subject to change up to and including the day of the auction.

### Reserve Price

The seller's minimum acceptable price at auction and the figure below which the auctioneer cannot sell. The reserve price is not disclosed and remains confidential between the seller and the auctioneer. Both the guide price and the reserve price can be subject to change up to and including the day of the auction.

### Buyer's Fees

Should your bid be successful you will be liable to pay a Buyer's Administration Charge of 1.35% of the purchase price plus VAT subject to a minimum fee of £1,800 plus VAT (unless stated otherwise within the property description in the catalogue) upon exchange of contracts to the Auctioneer. We strongly recommend all purchasers check the special conditions of sale as other fees may also apply to individual properties.

# Order of sale **Thursday 3 April 2025**

## For sale by public auction unless sold prior or withdrawn

1	127 Easton Road, Huyton, Liverpool L36 4NZ	£100,000+*
2	89 Windsor Road, Tuebrook, Liverpool L13 8BB	£225,000+*
3	56 Rector Road, Liverpool L6 0BY	£135,000+*
4	8 Low Wood Street, Liverpool L6 1EN	£85,000+*
5	21 Merton Road, Bootle, Merseyside L20 3BJ	£395,000+*
6	199 County Road, Walton, Liverpool L4 5PB	£40,000+*
7	91 Townsend Lane, Anfield, Liverpool L6 0AY	£110,000+*
8	17 Madelaine Street, Liverpool L8 8AP	£165,000+*
9	5 June Road, Liverpool L6 4DB	£70,000+*
10	62 Aigburth Road, Liverpool L17 7BN	£50,000+*
11	Apt 16 Mill View, Rutter Street, Liverpool L8 6AG	£50,000+*
12	79 Gilroy Road, Liverpool L6 6BG	£50,000+*
13	73 Wendell Street, Liverpool L8 0RG	£65,000+*
14	39 Peel Street, Liverpool L8 3SY	£275,000+*
15	132 Grosvenor Road, Wavertree, Liverpool L15 0HB	£70,000+*
16	143 High Street, Blackpool FY1 2DL	£150,000+*
17	46 Ivernia Road, Liverpool L4 6TF	£65,000+*
18	32 September Road, Liverpool L6 4DQ	£60,000+*
19	297 Breck Road/2 Windermere Street, Everton, Liverpool L5 6PU	£285,000+*
20	Woolston Lodge, Weir Lane, Woolston, Warrington WA1 4QQ	£700,000+*
21	7 Ampthill Road, Aigburth, Liverpool L17 9QL	£385,000+*
22	12/12a Greenbank Road, Liverpool L18 1HN	£350,000+*
23	10 Craighburn Road, Liverpool L13 8BN	£65,000+*
24	103 Hale Drive, Liverpool L24 0TQ	£100,000+*
25	6 Banner Street, Liverpool L15 0HQ	£85,000+*
26	254/254a Smithdown Road, Liverpool L15 5AH	£300,000+*
27	12 Dorset Avenue, Liverpool L15 2JA	£65,000+*
28	8 Esher Road, Kensington, Liverpool L6 6DF	£135,000+*
29	24 Broad Lane, Norris Green, Liverpool L11 8LZ	£115,000+*
30	38 Patricia Avenue, Birkenhead, Merseyside CH41 7BH	£65,000+*
31	94 Elizabeth Road, Fazakerley, Liverpool L10 4XP	£100,000+*
32	44 Lancelyn Court, Wirral, Merseyside CH63 9JL	£115,000+*
33	171 Lisburn Lane, Liverpool L13 9AQ	£85,000+*
34	2 Stanhope Drive, Huyton, Liverpool L36 4LN	£95,000+*
35	66 Hollingbourne Road, Liverpool L11 3AL	£90,000+*
36	3 Burnthwaite Road, Liverpool L14 1PY	£110,000+*
37	6 Ulster Road, Old Swan, Liverpool L13 5SS	£60,000+*
38	28 Cookson Road, Seaforth, Liverpool L21 4NU	£80,000+*
39	Land on the northwest side of Bailey Street, Liverpool L1 5DP	£160,000+*
40	4 Wolverton Street, Liverpool L6 5AH	£85,000+*
41	Apt 9, 28 Argyle Street, Liverpool L1 5DL	£100,000+*
42	82 Allerton Road, Woolton, Liverpool L25 7RQ	£245,000+*
43	11 Beech Street, Bootle, Merseyside L20 3HG	£60,000+*
44	10/10a Greenbank Road, Liverpool L18 1HN	£350,000+*
45	154 Lawrence Road, Liverpool L15 3HA	£125,000+*
46	84 Moscow Drive, Liverpool L13 7DJ	£100,000+*
47	Apt 426, 2 Moorfields, Liverpool L2 2BT	£27,000+*
48	26 Burleigh Road North, Liverpool L5 1TX	£85,000+*
49	61 Lenthall Street, Liverpool L4 5TN	SOLD PRIOR
50	290/290a Smithdown Road, Liverpool L15 5AJ	£235,000+*
51	125 Scotchbarn Lane, Prescot, Merseyside L35 7JA	£150,000+*
52	145 Walton Village, Liverpool L4 6TG	£85,000+*
53	186 Bedford Road, Bootle, Merseyside L20 2DT	£90,000+*
54	32 Euston Street, Liverpool L4 5PR	SOLD PRIOR
55	28 Castle Street, Woolton, Liverpool L25 7SW	£190,000+*
56	78 Morecambe Street, Liverpool L6 4AX	£60,000+*
57	346 Binns Road, Liverpool L13 1DD	£100,000+*
58	25 Makin Street, Liverpool L4 5QE	£65,000+*

59	21 Wendell Street, Liverpool L8 0RG	£70,000+*
60	123 Westminster Road, Liverpool L4 4LW	£200,000+*
61	Flat 1, Produce Exchange, 8 Victoria Street, Liverpool L2 6QJ	£50,000+*
62	3 Frogmore Road, Fairfield, Liverpool L13 3AU	£75,000+*
63	Flat 45, Produce Exchange, 8 Victoria Street, Liverpool L2 6QJ	£60,000+*
64	71 Fulwood Road, Aigburth, Liverpool L17 9PY	£165,000+*
65	13 Sutcliffe Street, Kensington, Liverpool L6 6AS	£60,000+*
66	Flat 5, 10–12 Crosby Green, Liverpool L12 7JZ	£50,000+*
67	37 Bishop Road, Liverpool L6 0BJ	£85,000+*
68	31 Cherry Court, Orchard Street, Warrington WA1 2TE	SOLD PRIOR
69	2 June Road, Liverpool L6 4DB	£50,000+*
70	12 Heald Street, Garston, Liverpool L19 2LY	£95,000+*
71	28 Bartlett Street, Liverpool L15 0HW	£85,000+*
72	Car Parking Spaces, Central Car Park, The Coombes, Polperro, Cornwall PL13 2QR	£60,000+*
73	Wheal Bush Cottage, Cox Hill, Chacewater, Truro TR4 8LY	£250,000+*
74	82 Hengar Manor, St. Tudy, Bodmin, Cornwall PL30 3PL	£60,000+*
75	Ground Floor Flat, 7 Portland Road, Plymouth PL1 4QN	POSTPONED
76	Flat 6, Kelwyn Court, Valley Road, Carbis Bay, St. Ives TR26 2QS	£185,000+*
77	87 Hengar Manor, St. Tudy, Bodmin, Cornwall PL30 3PL	SOLD PRIOR
78	86 Hengar Manor, St. Tudy, Bodmin, Cornwall PL30 3PL	SOLD PRIOR
79	7 Polsham Park, Paignton, Devon TQ3 2AD	£170,000+*
80	12 Foundry Flats, Foundry Square, Hayle, Cornwall TR27 4AE	£50,000+*
81	6 Lannoweth Road, Penzance, Cornwall TR18 3AB	£235,000+*
82	85 Fore Street, Bodmin, Cornwall PL31 2JB	£225,000+*
83	Flat 2, 10 Queens Gate, Lipson, Plymouth PL4 7PW	£150,000+
84	17 Third Avenue, Camels Head, Plymouth PL2 2EH	£100,000+*
85	1 Grenville Park, Stamford Hill, Stratton, Bude, Cornwall EX23 9AY	£450,000+*
86	Garage and parking adjacent to High View, Ayr, St. Ives TR26 1EN	£65,000+*
87	Flat 5, The Old Post Office, Fore Street, East Looe, Looe PL13 1DT	£85,000+*
88	2 Trevithick Cottages, Higher Drift, Buryas Bridge, Penzance, Cornwall TR19 6AE	£135,000+*
89	71 Wolborough Street, Newton Abbot, Devon TQ12 1LG	£155,000+*
90	9 Church Lane, Torquay TQ2 5SE	SOLD PRIOR
91	13 Parc Terrace, Newlyn, Penzance, Cornwall TR18 5AS	£80,000+*
92	7 Brook Terrace, Horrabridge, Yelverton, Devon PL20 7QU	£110,000+*
93	Panchos Villa, Victoria Square, Bodmin, Cornwall PL31 1EB	£100,000–£125,000*
94	Land at Bowl Rock, Lelant, St. Ives, Cornwall TR26 3JE	£35,000–£40,000*
95	50 Onslow Road, Fairfield, Liverpool L6 3BB	£150,000+*
96	Flat 5, 70 Wordsworth Street, Bootle, Merseyside L20 4JW	SOLD PRIOR
97	37 Tildsley Street, Bolton BL3 6PN	SOLD PRIOR
98	Flat 4a Station Road, Ainsdale, Southport, Merseyside PR8 3HS	£95,000+*
99	48/50 Kensington, Liverpool L7 8XB	£275,000+*
100	Land and Garage at 46 Sandheys Avenue, Liverpool L22 7RP	£150,000+*
101	Lyndale Drive, Codnor, Ripley, Derbyshire DE5 9QJ	£110,000+*
102	50 Calder Avenue, Ormskirk, Lancashire L39 4SF	£150,000+*
103	5 Snape Hill Close, Dronfield, Derbyshire S18 2GS	£110,000+*
104	14 Osborne Road, Tuebrook, Liverpool L13 8AT	£160,000+*
105	12 Kempton Road, Liverpool L15 1HF	£85,000+*
106	Flat 2, 7 Swiss Road, Liverpool L6 3AT	£55,000+*
107	10 Scott Street, Bootle, Merseyside L20 4PF	SOLD PRIOR
108	14 Southey Street, Bootle, Merseyside L20 4LL	SOLD PRIOR
109	42 Fitzgerald Road, Liverpool L13 5XL	£75,000+*
110	77 Caldys Road, Liverpool L9 4RZ	£100,000+*

Next auction **Tuesday 20 May 2025**

01395 275 691 | [auctions@countrywide.co.uk](mailto:auctions@countrywide.co.uk)

[www.countrywidepropertyauctions.co.uk](http://www.countrywidepropertyauctions.co.uk)

  
Countrywide  
Property Auctions





### Description

A rare opportunity to acquire two/three parking spaces situated in the heart of the popular seaside town of Polperro, located in a secure car park behind The Ship Inn. The land would accommodate three smaller vehicles, or two larger vehicles and will appeal to both local residents and business owners providing valuable parking in the centre of the town.

### Situated

The popular seaside town of Polperro is a traditional fishing village, steeped in history and offering a range of bespoke shops, cafes and public houses catering for both local residents and holiday makers.

### Viewings

At any reasonable time during daylight hours or by prior appointment with Stratton Creber Looe 01503 262271.  
General enquiries Countrywide Property Auctions 01395 275691.

### EPC Rating

Exempt

### Council Tax Band

Exempt.

### Tenure

Freehold







### Description

A versatile and well-presented four/five bedroom detached and extended character cottage situated in a rural hamlet yet readily commutable to both Truro and Falmouth, having the benefit of a garage, small outbuilding/store and permitted parking adjacent to the bridleway, along with a large south facing garden. Cash buyers only.

### Situated

Cox Hill is a rural hamlet with both Wheal Unity Woods and the Bissoe cycle trail nearby. Chacewater caters for day to day needs with local shops, primary school and doctor's surgery, with further facilities and amenities available in both Truro and Falmouth.

### Ground Floor

Entrance hall, lounge, kitchen/breakfast room, sun room, study/bedroom five, utility/cloak room.

### First Floor

Large landing, four bedrooms, family bathroom and en-suite shower room.

### Outside

Mature gardens to the rear of the property, garage, small outbuilding/store and permitted parking adjacent to the bridleway.

### Viewings

Strictly by prior appointment with Stratton Creber Truro 01872 275376. General enquiries Countrywide Property Auctions 01395 275691.

### EPC Rating

E

### Council Tax Band

C

### Tenure

Freehold



### Note

The mining search and drilling investigation reports will be available to download in the legal pack. We understand that main dwelling itself is unaffected by and not considered to be at risk of mining related subsidence. However, we understand that mining features

have been identified beneath the garage and in part of the garden. Interested parties must make and rely upon their due diligence prior to bidding. Cash buyers only.



### Description

A three bedroom detached holiday villa situated on the ever popular Hengar Manor holiday park. The property offers open plan lounge/kitchen/dining area, double bedroom and shower room to the ground floor, with master bedroom with balcony off, bedroom three and family bathroom to the first floor. This child- and pet-friendly holiday park offers a wide range of recreational facilities, with bar/restaurant and entertainment during peak season, swimming pool, tennis courts, coarse fishing lakes and 35 acres of parkland/communal gardens.

### Situated

Hengar Manor is set just outside the Cornish village of St Tudy, readily commutable to the A30 and offering 35 acres of parkland, with fishing lakes, pitch and putt golf course, swimming pool, tennis courts and play park.

### Ground Floor

Open plan lounge/kitchen/diner, double bedroom and shower room.

### First Floor

Landing, master bedroom with balcony off, bedroom three and a shower room.

### Outside

Communal gardens and grounds, on site facilities, allocated parking space and visitors car parking.

### Viewings

Strictly by prior appointment with Stratton Creber Bodmin 01208 74422. General enquiries Countrywide Property Auctions 01395 275691.

### EPC Rating

D

### Council Tax Band

B

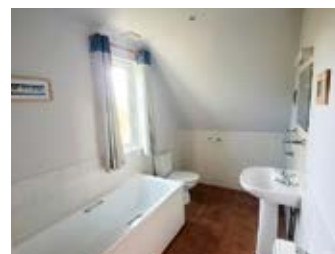
### Tenure

Leasehold

Lease length: 999 years from 1 December 2002.

Ground Rent: £480

Maintenance Charges: £4,800







### Description

A vacant one bedroom self-contained flat requiring refurbishment, having the benefit of access to the rear courtyard. Portland Road is a well-established residential area in Stoke village situated close to Devonport Park, local shops and public transport links throughout Plymouth city centre.

### Situated

Stoke village is a sought after location circa 1 mile from Plymouth city centre, with a wide range of shops and restaurants, schools and public houses, readily commutable to the A38.

### Ground Floor

Communal hallway. Ground Floor Flat: Entrance hall, sitting room, kitchen/diner, double bedroom and shower room.

### Outside

Access to the rear courtyard.

### Viewings

Strictly by prior appointment with Miller Countrywide Plymouth 01752 668242. General enquiries Countrywide Property Auctions 01395 275691.

### EPC Rating

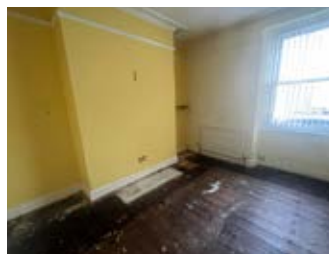
C

### Council Tax Band

A

### Tenure

The property will be issued with a new 999 year lease upon completion.  
Ground rent £0  
Service Charge £27.05 per annum  
Buildings Insurance £117.24 per annum





### Description

A two bedroom ground floor apartment situated in a purpose built apartment block in Carbis Bay, having the benefit of sea views to Godrevy, communal gardens and an allocated parking space. The property has previously been utilised as a successful holiday lettings venture, with a nearby bus service to St Ives and easy access to the Southwest Coastal Path and is to be sold fully furnished, with any onwards bookings to be transferred. The property may also appeal to those looking for a low maintenance residence in Carbis Bay for their own occupation.

### Situated

Kelwyn Court is situated in the popular seaside location of Carbis Bay, offering beautiful sandy beaches, coastal path walks and regular bus services to the nearby town of St Ives.

### Ground Floor

Entrance hall, open plan lounge/kitchen/dining room, two double bedrooms and shower room.

### Outside

Communal gardens and an allocated parking space.

### Viewings

Strictly by prior appointment with Miller Countrywide St Ives 01736 797331. General enquiries Countrywide Property Auctions 01395 275691.

### EPC Rating

E

### Council Tax Band

B

### Tenure

Leasehold for the term of 999 years from 29th June 1986 We are advised by the vendors that the ground rent, service charge and buildings insurance amounts to £1,245 per annum.







### Description

A two bedroom fully furnished semi-detached holiday bungalow, with adjacent car parking space and patio seating area, situated on the ever popular and recently refurbished Hengar Manor holiday park, which is both family- and pet-friendly. The property has been a successful holiday lettings venture for the last 10 years and has the benefit of 979 year lease remaining, along with the use of the communal grounds and facilities on site.



### Situated

Hengar Manor is situated near the village of St Tudy and is readily accessible to the A30. Hengar Manor is set in 35 acres of parkland, with facilities on site including a bar/restaurant and entertainment room which are operational during the peak holiday season, with an indoor heated swimming pool, pitch and putt golf course, tennis courts and coarse fishing lakes which are available for guests to use all year round.



### Ground Floor

Open plan lounge/kitchen/dining room, inner lobby with two bedrooms and shower room.

with Stratton Creber Bodmin 01208 74422. General enquiries Countrywide Property Auctions 01395 275691.

rates have been payable since 2011, as the properties have qualified for small business rates relief.

### Outside

Paved patio seating area, adjacent car parking space and additional visitors car parking area, use of the communal grounds and on site facilities.

### EPC Rating

E

### VOA Rating

86 & 87 Hengar Manor are currently jointly listed on the VOA website with a combined rateable value of £3,300 per annum. We understand that no

### Tenure

Leasehold

### Site Fees 2025/2026

Site fees £3,682.50 1st April 2025 – 31st March 2026. Ground rent £421.97 – 979 years left on lease

### Note

If purchased as a holiday home, the property is exempt from the second home double council tax levy as the property cannot be used as a permanent residence.

### Viewings

Strictly by prior appointment





### Description

A two bedroom fully furnished semi-detached holiday bungalow, with adjacent car parking space and patio seating area, situated on the ever popular and recently refurbished Hengar Manor holiday park which is both family- and pet-friendly. The property has been a successful holiday lettings venture for the last 10 years and has the benefit of a 979 year lease, along with the use of the communal grounds and facilities on site.

### Situated

Hengar Manor is situated near the village of St Tudy and is readily accessible to the A30. Hengar Manor is set in 35 acres of parkland, with facilities on site including a bar/restaurant and entertainment room which are operational during the peak holiday season, with an indoor heated swimming pool, pitch and putt golf course, tennis courts and coarse fishing lakes which are available for guests to use all year round.

### Ground Floor

Open plan lounge/kitchen/dining room, inner lobby with two bedrooms and shower room.

### Outside

Paved patio seating area, adjacent car parking space and additional visitors car parking area, use of the communal grounds and on site facilities.

### Viewings

Strictly by prior appointment with Stratton Creber Bodmin 01208 74422. General enquiries Countrywide Property Auctions 01395 275691.

### EPC Rating

E

### VOA Rating

86 & 87 Hengar Manor are currently jointly listed on the



Not to scale. All measurements are approximate. The floor plan is for information only and does not constitute an offer. The actual floor plan may vary from the diagram shown.

VOA website with a combined rateable value of £3,300 per annum. We understand that no rates have been payable since 2011 as the properties have qualified for small business rates relief.

### Site Fees 2025/2026

Site fees £3,682.50 1st April 2025 – 31st March 2026.

### Tenure

Leasehold Ground rent £421.97 – 978 years left on lease

### Note

If purchased as a holiday home, the property is exempt from the second home double council tax levy as the property cannot be used as a permanent residence.





### Description

A high yielding three storey end of terrace property requiring some remedial works and updating, currently comprising three × one bedroom apartments and two studio apartments, all currently let and generating an income of £2,675pcm/£32,100pae. The property has the benefit of on drive parking and an enclosed rear garden currently allocated to the ground floor rear flat, a gas central heating system serving all five flats and included in the rents passing, with top-up smart meters providing electricity to each unit. The property is likely to appeal to the career lettings fraternity and to those looking for a post works break-up and resale opportunity.

### Situated

Polsham Park is a popular residential lettings area being conveniently situated for the town centre facility and amenities of Paignton, along with its sandy beaches and pier.

### Ground Floor

Communal entrance hall, studio flat to the front of the property and a one bedroom garden flat to the rear with enclosed garden.

### First Floor

Landing, two × one bedroom flats.

### Second Floor

Studio flat.

### Outside

On drive parking and an enclosed rear garden.

### Viewings

Strictly by prior appointment with Fulfords Paignton 01803 529529. General enquiries Countrywide Property Auctions 01395 275691.

### Current Rents

Flat 1: £600pcm/£7,200pcm



Flat 2: £500pcm/£6,200pcm  
Flat 3: £550pcm/£6,600pcm  
Flat 4: £500pcm/£6,200pcm  
Flat 5: £525pcm/£6,300pcm

### EPC Ratings

All flats are EPC rated D

### Council Tax Bands

All flats are Council Tax Band A

### Tenure

Freehold





General view of building

### Description

A one bedroom first and second floor penthouse flat with parking space situated close to the harbour, mainline railway station and town centre shopping and leisure facilities in the popular coastal resort of Hayle. The property offers an open plan lounge/kitchen/diner, double bedroom area and bathroom, with the remainder of a renewable 99 year lease which commenced in 1986.

### Situated

The popular coastal town of Hayle is renowned for its 3 miles of sandy beaches, harbour, selection of bespoke shops and restaurants, supermarket and retail park, with excellent access to the A30 and a mainline railway station.

### Ground Floor

Communal entrance hall with stairs to all floors.

### Flat 12 – First Floor

Entrance hall, open plan lounge/kitchen/diner, bathroom and utility cupboard. Staircase up to open plan double bedroom area.

### Outside

Allocated parking space to the rear of the building.

### Viewings

Strictly by prior appointment with Miller Countrywide St Ives 01736 797331. General enquiries Countrywide Property Auctions 01395 275691.

### EPC Rating

F

### Council Tax Band

A



### Tenure

Leasehold 99 year lease which commenced in 1986.

Service/Maintenance charge:

£600 per annum

Ground rent: £50 per annum







### Description

A five bedroom licensed HMO, with accommodation set over three floors having two communal kitchens and shower rooms at ground and first floor level, plus an additional self-contained one bedroom flat, being conveniently situated for Penzance town centre and mainline railway station. The property when fully let generates an income of £3,350pcm/£42,200pcm.

### Situated

The thriving seaside town of Penzance offers a wide variety of shopping and leisure facilities catering for all age groups, along with its Promenade and Jubilee lido, restaurants, art galleries and Morab Gardens. Penzance is readily commutable to the A30 and has excellent public transport links throughout Cornwall.

### Ground Floor

Communal entrance hall, two letting rooms, shower room and kitchen. Self-contained flat: kitchen, sitting room, bedroom and shower room.

### First Floor

Landing, two letting rooms, kitchen and shower room.

### Second Floor

Letting room five.

### Outside

Walled frontage and rear courtyard.

### Viewings

Strictly by prior appointment with Miller Countrywide Penzance 01736 364260. General enquiries Countrywide Property Auctions 01395 275691.

### EPC Rating

E



### Council Tax Band

D

### Tenure

Freehold

### Note

Room one is currently vacant and advertised as available to let from the 24th March 2025 at £575pcm/£6,900pcm. All rooms are on pre-paid electricity card meters, with all other utilities supplied by the landlord.





### Description

A vacant detached mixed use property set in the heart of Bodmin town centre, with versatile accommodation arranged over four floors, having a large car park to the front of the property and a rear garden. The property currently comprises 12 principal rooms set over the four floors, along with the former shop premises at ground floor level and a WC, cellar, two kitchens and two bathrooms. The property is likely to appeal to those looking for a sizeable live/work unit in the town centre, or as a multifaceted investment opportunity. A planning application has been submitted for conversion into nine flats, under application number PA20/08180, which is still awaiting decision.

### Situated

Bodmin caters well for day to day needs with shops, restaurants and educational facilities catering for all age groups, along with retail parks and superstores, being readily accessible to both the A30 and A38 road networks.

### Ground Floor

Main retail unit, inner hallway with staircases leading to the first and lower ground floor, three further rooms, two WC's and utility room.

### Lower Ground Floor

Cellar with natural light and access to the rear garden.

### First Floor

Accessed both from street level and internally, with landing, nine rooms, kitchen, a bathroom and a shower room.

### Second Floor

Landing and further bedroom/reception room.



### Outside

Large car park to the front of the property and a garden to the rear of the property.

### Viewings

Strictly by prior appointment with Miller Countrywide Bodmin 01208 77991. General enquiries Countrywide Property Auctions 01395 275691.

### EPC Rating

E

### VOA Rating

£8,900

### Tenure

Freehold





General view of building

### Description

A spacious ground floor two bedroom apartment with an allocated parking space, set in the prestigious Queens Gate area of Lipson with views over Freedom Fields park to The Hoe. The property offers an open plan lounge/kitchen/diner, master bedroom with en-suite shower room, bedroom two, a family bathroom and has a 999 year lease which commenced in 2006.

### Situated

Queens Gate is a highly sought after terrace, set in a private road with gated access at both ends of the terrace and direct views over Freedom Fields park to The Hoe beyond and within walking distance of the Barbican and Plymouth city centre.

### Ground Floor

Communal entrance hall.

**Flat Two** Entrance hall, open plan lounge/kitchen/diner with bay window, master bedroom with en-suite shower room, bedroom two and a family bathroom.

### Outside

Allocated parking space and communal bin store.

### Viewings

Strictly by prior appointment with Miller Countrywide Plymouth 01752 668242. General enquiries Countrywide Property Auctions 01395 275691.

### EPC Rating

D

### Council Tax Band

B

### Tenure

Leasehold 999 years from 2006.







### Description

A three bedroom, two reception room, end of terrace property requiring modernisation and having the benefit of a walled frontage and enclosed rear garden. Third Avenue is a well-established residential area with on street parking and is conveniently situated for local shops, public transport links to the city centre and readily commutable to the A38.

### Situated

Camels Head is a popular residential location within St Budeaux, conveniently situated for both local shops, the town centre facilities and amenities, the dock yard and Plymouth city centre, being readily commutable to the A38.

### Ground Floor

Entrance hall, sitting room, dining room and kitchen/breakfast room.

362481. General enquiries  
Countrywide Property Auctions  
01395 275691.

### First Floor

Landing, three bedrooms and bathroom.

### Outside

Walled front garden area and enclosed rear garden. On street parking.

**EPC Rating**  
E

**Council Tax Band**  
A

**Tenure**  
Freehold

### Viewings

Strictly by prior appointment  
with Fulfords St Budeaux 01752







### Description

A reverse level five bedroom detached property, enjoying a plot size of circa 0.5 acres, situated in the highly sought after residential location of Stamford Hill in Stratton offering panoramic views over the surrounding countryside. The property comprises entrance hall with cloakroom off, lounge, dining room, kitchen/breakfast room with utility room off and study at ground floor level, with stairs down to the lower ground floor, with lower hallway giving access to two double ensuite bedrooms, three further bedrooms, family bathroom and sunroom. The property has parking for several vehicles on drive, a detached double garage and private rear gardens.

### Situated

The town of Stratton offers a range of local facilities and amenities including shops, supermarket, restaurants and public houses, being readily commutable to the A39/A3072, with further facilities and beaches at nearby Bude.

### Ground Floor

Entrance hall, lounge, dining room, kitchen/breakfast room with utility room off and a study.

### Lower Ground Floor

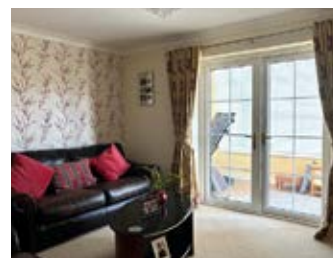
Hallway, master bedroom with en-suite bathroom, bedroom 2 with en-suite shower room, three further bedrooms, family bathroom and sun room.

### Outside

Private front and rear gardens with rural views, detached double garage and additional on drive parking for several vehicles.

### Viewings

Block viewings strictly by prior appointment with Miller Countrywide St Ives 01736 797331. General enquiries



Countrywide Property Auctions  
01395 275691.

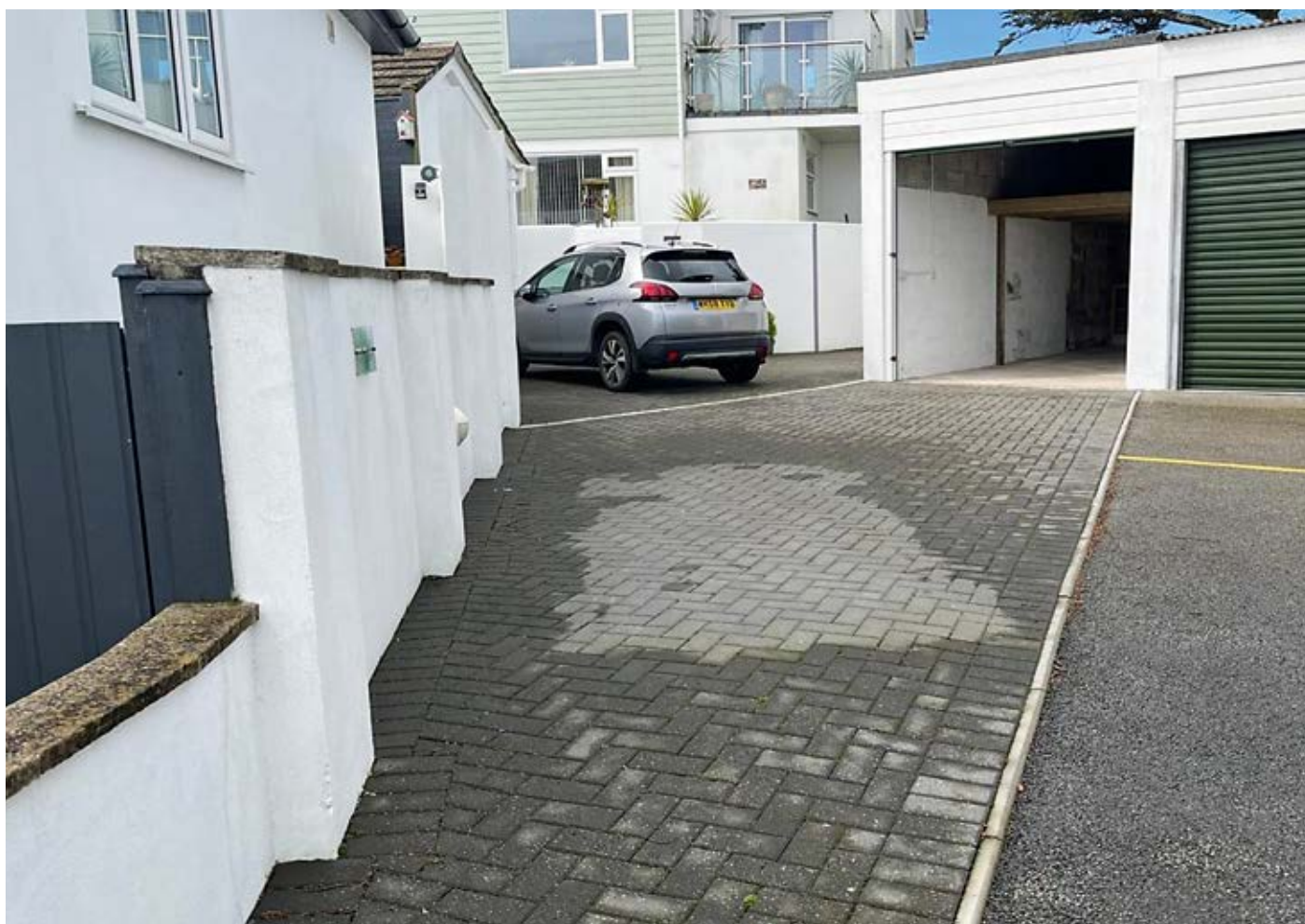
**EPC Rating**  
C

**Council Tax Band**  
G

**Tenure**  
Freehold

### Auctioneer's Note

Part of the rear garden retaining wall has suffered from slippage and will require remedial works/repair/replacement. Please refer to the legal pack for further information.



### Description

A rare opportunity to acquire a larger than average lock-up garage measuring 24'1" length × 9'8" width × 9'10" internal height, with an additional forecourt parking space and a useful storage shed 10' × 6' to the rear situated in St Ives. The property is likely to appeal to both local residents and business people, along with the holiday/residential lettings fraternity within the ever popular seaside town of St Ives.

### Situated

St Ives is a popular seaside town hosting an array of bespoke shops, restaurants, art galleries and leisure facilities catering for all age groups, along with its glorious sandy beaches.

### Garage

Up and over door, with shelving/ storage racks and an additional on drive parking space. Wooden storage shed to the rear of the garage.

### EPC Rating

Not applicable

### Council Tax Band

Not applicable

### Tenure

Freehold

### Viewings

Strictly by prior appointment with Miller Countrywide St Ives 01736 797331. General enquiries Countrywide Property Auctions 01395 275691.







### Description

A well-presented fully furnished purpose built first floor studio apartment, situated to the rear of The Old Post Office in the heart of the popular seaside town of Looe in close proximity of Looe River, Banjo Pier and the beach. The apartment comprises an open plan living/dining area with kitchen off, a screened double bedroom area with vaulted ceiling and atrium with electrically operated windows and blinds and a bathroom. The apartment has previously been utilised as a successful holiday lettings venture and is likely to appeal to both owner occupiers and the residential/holiday lettings fraternity to add to their portfolios, with the benefit of the remainder of a 999 year lease.

### Situated

The ever popular seaside town of Looe is a thriving holiday destination with its sandy beach, Banjo pier and the South West Coastal Path. The town has a working harbour, a wide range of restaurants and bespoke shops, with a branch railway line to Liskeard.

### Ground Floor

Communal entrance hall with staircase rising to all floors.

### First Floor

**Flat 5** Open plan lounge/dining/ kitchen with screened double bedroom area off, bathroom.

### Viewings

Strictly by prior appointment with Stratton Creber Looe 01503 262271. General enquiries Countrywide Property Auctions 01395 275691.

### EPC Rating

C



### Council Tax Band

Currently exempt as used for holiday lettings.

### Tenure

Leasehold 981 years remaining  
Service charge: £1,631.99 per annum  
Insurance: £136.01 per annum  
Ground rent: £150 per annum







### Description

A two bedroom character cottage requiring modernisation situated in the rural hamlet of Drift. The property offers an open plan lounge/kitchen/diner with feature range fireplace to the ground floor and french doors to the rear garden from the kitchen area, with two double bedrooms and a bathroom at first floor level. The property has the benefit of a walled frontage and good sized terraced rear garden with shed/summerhouse and residents car park nearby.

### Situated

Drift is a rural hamlet with residents car park and pretty reservoir walks a short distance away. The thriving seaside town of Penzance is circa 3 miles away, offering a wide variety of shopping and leisure facilities catering for all age groups.

### Ground Floor

Open plan lounge/kitchen/diner with feature fire range and french doors to the rear garden.

### First Floor

Landing, two double bedrooms and bathroom.

### Outside

Walled front garden and good sized rear terraced garden with shed/summerhouse.

### Viewings

Strictly by prior appointment with Miller Countrywide Penzance 01736 364260. General enquiries Countrywide Property Auctions 01395 275691.

### EPC Rating

F

### Council Tax Band

A



**Tenure**  
Freehold







### Description

A three bedroom Grade II listed mid terrace three storey town house requiring modernisation, being conveniently situated for Newton Abbot town centre. The property comprises entrance hallway, sitting room, snug, kitchen/diner/sunroom to the ground floor, a double bedroom, bathroom and separate shower room to the first floor, two double bedrooms to the second floor and a useful loft room with velux window. To the rear of the property there is a large enclosed terraced garden, with pond and storage shed.

### Situated

Wolborough Street is conveniently situated for the thriving town centre of Newton Abbot, offering a wide range of shopping, leisure and educational facilities catering for all age groups, supermarkets and restaurants, being readily commutable to the A30/A38 road networks and in turn the M5.

### Ground Floor

Entrance hall, sitting room, snug, kitchen/diner/sunroom giving access to the rear garden.

### First Floor

Landing, bedroom one, bathroom, shower room.

### Second Floor

Landing, two double bedrooms.

### Top Floor

Useful loft room with velux window.

### Outside

Large enclosed rear terraced garden, with patio seating areas, pond and storage shed.

### Viewings

Strictly by prior appointment with Fulfords Newton Abbot 01626 351951. General



enquiries Countrywide Property Auctions 01395 275691.

### EPC Rating

D

### Council Tax Band

B

### Tenure

Freehold



### Description

A vacant two bedroom end of terrace property requiring refurbishment being conveniently situated for Torquay town centre. The property offers an open plan lounge/kitchen/diner and bathroom to the ground floor with two double bedrooms to the first floor. Access is via a shared passageway giving access to 9 & 9A, along with a shared courtyard garden to the rear of the property.

### Situated

The Torre area of Torquay is conveniently situated for Torquay town centre and seafront, with local facilities and amenities including a convenience store, bakery, hairdressing salon, public houses and doctor's surgery.

### Ground Floor

Open plan lounge/kitchen/diner and bathroom.

### First Floor

Landing and two double bedrooms.

### Outside

Courtyard style garden to the rear of the property which is accessed via a pedestrian passageway, both shared with 9A Church Lane.

### Viewings

Strictly by prior appointment with Miller Countrywide Torquay 01803 291429. General enquiries Countrywide Property Auctions 01395 275691.

### EPC Rating

E

### Council Tax Band

A

### Tenure

Freehold







### Description

A three bedroom mid terrace property requiring modernisation, having the benefit of two reception rooms with feature fireplaces and low maintenance front and rear gardens. The property is likely to appeal to those looking for a family home in this popular location and also to the residential lettings investors. Cash buyers only.

### Situated

Newlyn is a vibrant coastal town, famous for its working harbour, art galleries and bespoke shops catering for day to day needs, with further facilities and amenities available in Penzance town centre, along with a mainline railway station.

### Ground Floor

Entrance hall, sitting room, dining room and kitchen.

### First Floor

Landing, two double bedrooms, one single bedroom and a shower room.

### Outside

Low maintenance front and rear gardens.

### Viewings

Strictly by prior appointment with Miller Countrywide Penzance 01736 364260. General enquiries Countrywide Property Auctions 01395 275691.

### EPC Rating

C

### Council Tax Band

B

### Tenure

Freehold



### Note

Cash buyers only due to the property having been found to have Mundeic Grade C2 in one of the samples, with the remaining samples being classified as Grade A1. Please refer to the legal pack for further information.







### Description

A three bedroom semi-detached property, requiring refurbishment throughout, situated in the extremely sought after moorland village of Sampford Spiney. The property has the benefit of front and rear gardens requiring formalisation, enjoying open rural views and on street parking. The property is likely to appeal to the builder/developer fraternity, as a post works onwards resale opportunity and to those looking to create their own home in this rarely available location.

### Situated

Sampford Spiney is an extremely sought after village situated on the fringes of Dartmoor National Park and readily commutable to the nearby towns of Horrabridge, Tavistock, Yelverton and Plymouth city centre.

### Ground Floor

Entrance hall, sitting room, kitchen/diner, rear lobby, store room and WC.

### First Floor

Landing, three bedrooms and bathroom.

### Outside

Front and rear gardens requiring formalisation, both with open views over the surrounding countryside.

### Viewings

Strictly by prior appointment with Fulfords Tavistock 01822 616121. General enquiries Countrywide Property Auctions 01395 275691.

### EPC Rating

TBC

### Council Tax Band

B

### Tenure

Freehold







### Description

An interesting opportunity to acquire a sizeable, two storey detached former office premises with allocated parking. The property was previously utilised as two independent office suites, with part of the premises now requiring refurbishment but offering tremendous potential for a variety of uses/ redevelopment, subject to any requisite consents, upon which interested parties must make and rely upon their own planning enquiries of Cornwall Council Planning Department.



### Situated

The thriving town of Bodmin offers a wide range of shopping, leisure and educational facilities catering for all age groups, along with superstores and retail parks, being readily accessible to the A30/A38 road networks giving access throughout Devon and Cornwall.

### Ground Floor

Entrance vestibule, six offices, storage rooms, two cloakrooms, shower room and kitchen/staff room with patio off.

### First Floor

Four offices, kitchen/staff room and shower room. Large roof terrace with views over the townscape to the countryside beyond.

### Outside

Allocated parking spaces.

### Viewings

Strictly by prior appointment with Stratton Creber Bodmin 01208 74422. General enquiries Countrywide Property Auctions 01395 275691.

### Commercial EPC Rating

E

### VOA Ratings

Ground Floor £12,250

First Floor £6,900

### Note

We understand that the property has a right of access over the driveway and a share of the maintenance costs for the upkeep of the driveway and the shared drainage. Please refer to the legal pack for further information.

### Tenure

Freehold





### Description

A rare opportunity to acquire a parcel of land measuring circa 2 acres, in an idyllic streamside setting with a mixture of broadleaf woodlands, open clearings for occasional recreational camping/caravanning, two non-residential caravans on site providing breaktime facilities and a composting toilet. Within the grounds there are granite outcrops and the remains of an old water mill and leat, attracting an abundance of wildlife throughout the year.

### Situated

The land is situated at Lelant Downs, on the outskirts of St Ives, enjoying a secluded rural setting yet being within 2 miles of the A30 and mainline railway station at St Erth. The area offers an abundance of coastal path and countryside walks, with both the St Michael Way and Trecrom Iron Age Fort in close proximity to the land.

### Viewings

Strictly by prior appointment with Miller Countrywide St Ives 01736 797331. General enquiries Countrywide Property Auctions 01395 275691.

### Tenure

Freehold

### What3words location

Populate.doghouse.ducks

### EPC Rating

Not applicable

### Council Tax Band

Not applicable





# COUNTRYWIDE LAND & NEW HOMES HAS THE UK'S LEADING AGENCY SERVICES PROPOSITION

From initial land appraisal, through to market intelligence reports and new homes sales, we deliver an unrivalled level of integrated support.

Irrespective of the size of the site you are looking to sell, the Countrywide land team provide comprehensive advice and local expertise, supported by current market intelligence, which ensures we will maximise the value of your asset. Our vastly experienced team of regional land managers cover all aspects of the development process enabling us to provide the appropriate service and support for our client land owners.

- Land Disposal and Acquisition
- Assembly
- Guidance on Scheme Optimisation, Maximising Yields in any given location
- Section 106 Viability & Negotiation with reputable registered providers
- Care Homes & Retirement Housing
- Land & Property Auctions
- Formal RICS Valuations & Receivership Disposal
- New Homes Sales & Marketing



**Talk to Countrywide.**

**Countrywide**

Land & New Homes

## **South West**

Charlie Staines – New Homes Partner Devon & Cornwall

**T. 07731 988875**

E. [charlie.staines@countrywide.co.uk](mailto:charlie.staines@countrywide.co.uk)

## **South**

Paul Curtin – Head of Land

**T. 07917 816371**

E. [paul.curtin@countrywide.co.uk](mailto:paul.curtin@countrywide.co.uk)

**[www.countrywide.co.uk](http://www.countrywide.co.uk)**



# Buy-to-let Management Special Offer

**Considering property investment? Our experts will help you make the best choice. Plus get a special 50% Discount on our full management and rent collect services\***

- ✓ Areas to buy in for optimum yield
- ✓ Best property types to meet tenant demand
- ✓ Property features to maximise rental income
- ✓ Compliance advice to avoid unnecessary costs

Countrywide is one of the UK's largest property networks. We have over 600 branches across the UK with access to all the services you need when it comes to investing in buy-to-let property.

**Our local agents will help you find the right opportunity for you in the South West.**

\*Also applicable to property portfolios. Terms and conditions apply.

**To find out more contact:**

**Lucy Vans-Colina**

Miller Countrywide | 01803 214275

[Lucy.Vans-Colina@millercountrywide.co.uk](mailto:Lucy.Vans-Colina@millercountrywide.co.uk)

**fulfords**  
ESTABLISHED 1863





# Don't just take our word for it

*Good morning Wendy,*

*Thank you for your assistance in finally getting the property sold and providing an excellent service throughout the process. You were indeed spot on with the valuation, not quite what we originally marketed it for two years ago but I think as good as could be expected in the current financial climate. At least I no longer have the worry of how to fund the double Council Tax again from next month!*

*Kind regards,*

*Chris*

*I would definitely recommend the services of Countrywide property auctions 'South West'.*

*From the initial contact with Amanda of Miller Countrywide Estate agents through to the final strike of the auctioneer's hammer, the experience was positive and ran smoothly.*

*I felt in control and was kept in the loop throughout. Wendy Alexander was especially sensitive to my requests and queries and from the beginning I felt the sale of my meadow was in good hands.*

*The process was made transparent providing a range of services, and on request, a choice of solicitors which made the journey of sale seamless.*

*SH.*

Countrywide

Property Auctions

To sell your own property  
please call us now on

01395 275 691 or email

[auctions@countrywide.co.uk](mailto:auctions@countrywide.co.uk)

# Money Laundering Regulations

Due to Money Laundering Regulations for buying and selling at auction, we are now required by law to ID check everyone who intends to bid at auction. This information is in order for us to carry out customer due diligence in compliance with the regulations. There are no exceptions and Sutton Kersh takes its obligations very seriously.

IF YOU HAVE ANY QUERIES, PLEASE CONTACT US ON 0151 207 6315. Thank you for your understanding and helping us comply with these regulations.

## ID can be approved as follows:

The quickest and easiest way for us to verify your identity and for you to become "bid ready" is via our online registration process. You will be invited to complete our process via your tablet or smartphone using our partners Credas verification app. Once you are verified you will be able to complete telephone, internet or proxy bidding forms through your user account.

### Alternatively

If you are unable to complete our online registration process and will be sending us a hard copy of the remote bidding form, we will require certified ID that has been identified by a professionally recognised individual. A list of acceptable documents can be found below.

Registration must be completed in advance of the auction date, otherwise you will be unable to bid.

Solicitors, the bank, an accountant, or other professional body including ourselves can certify the relevant ID. <https://www.gov.uk/certifying-a-document>.

## What the regulations mean for you as a bidder at the auction:

1. In the case of **an individual bidding at auction**, we require 3 forms of certified ID, one photographic and one proof of residence – a list of acceptable documents can be found below.
2. In the case of **an individual acting on behalf of a third party individual**, we require all parties to complete our Credas ID check or provide 3 forms of certified ID, together with authorisation to act for the third party – a list of acceptable documents can be found below.
3. In the case of **an individual acting on behalf of a UK registered limited company or Limited Liability Partnership (LLP)** we will require evidence of authorisation to act together with details about the company including:
  - Company Registration Number
  - Certificate of incorporation
  - Proof of Registered Office Address
  - Full names of Board of Directors
  - For an LLP, ID for 2 designated members
  - Proof of Registered Office Address
  - ID for the individual(s) controlling the transaction
  - ID for the individual(s) who (directly or indirectly) hold more than 25% of the capital, profits or voting rights
  - For LLPs we require ID for 2 designated members
4. In the case of **business partnerships**, we require all partners and any parties controlling the transaction to complete our Credas ID check or provide 3 forms of certified ID, together with authorisation to act for the third party – a list of acceptable documents can be found below.
5. In the case of **Trusts** we require a copy of the trust deed, ID for the trustees and ID for any beneficiary with an interest of more than 25% in the trust. All parties must complete our Credas ID check or provide 3 forms of certified ID, together with authorisation to act for the third party – a list of acceptable documents can be found below.
6. Funds for the deposit – The deposit must be paid form a UK bank or building society. We may ask for evidence of the source of funds and the link between the bidder or buyer and the provider of the funds.
7. Your ID will be kept on file in line with our group document retention policy and we will only require updated documents if your name or address changes. Any documents provided to us will be recorded and copied for audit purposes as part of our Anti Money Laundering obligations. We will also electronically verify your identity, Credas will undertake a search with Experian for the purposes of verifying your identity. To do so, Experian may check the details you supply against any particulars on any database (public or otherwise) to which they have access this is not a credit check but may leave a soft footprint on your records. Experian may also use your details in the future to assist other companies for verification purposes. A record of the search will be retained.
8. Pre-registration to bid remotely will need to be in place 24 hours before the date of the auction. In all cases we will require proof of funds.



## Acceptable Identification Documents

We require **both** primary and secondary identification documents.

Please note, the same ID document(s) cannot be used more than once. We **do not** accept expired documents outside of their valid dates.

### **A** Primary documents – individual's proof of ID

(**one** document from **List 1** or **one** document from **both List 2 and List 3**)

#### **List 1:**

- Valid passport with a full Machine Readable Zone (MRZ)
- Valid photo card driving licence (Full and Provisional)
- Valid full National Identity Card with MRZ (both sides)
- Valid Firearms certificate/shotgun licence.
- Valid UK Biometric Residence Permit (both sides)

**or**

#### **List 2:**

- Local authority council tax bill (for the current council tax year)
- Department of Work & Pensions letter within the last **12** months
- Her Majesty's Revenue and Customs (HMRC) notification dated within the last **12** months
- Disclosure and Barring Service (DBS) letter within the last **12** months
- Home Office Letter within the last **12** months
- Valid full UK driving licence (non-photo, paper) issued before 1998 (as long as the address is current)

**and**

#### **List 3:**

- Local authority council tax bill (for the current council tax year)
- Utility bill (such as electricity, gas, landline, satellite TV or water bill dated within the last **3** months (**accept internet printed**))
- Bank Letter within the last **3** months
- Credit card statement, dated within the last **3** months
- Bank/building society statements/summary, dated within the last **3** months including account number and sort code, as verifiable (**accept internet printed**)
- Court appointment letter within the last **12** months

### **B** Secondary documentation – individual's proof of address

**Secondary identification documents must show full name and current home address. We accept downloaded utility bills and bank statements printed from the internet, as identified below, however for all other documents, we must see/verify the originals.**

**Note:** to avoid any delays please do not delete bank account numbers and sort codes, National Insurance numbers as we are able to verify these details.

**Note:** we do **not** accept expired documents outside of their valid dates.

- Valid full photo card driving licence (Full and Provisional)
- UK bank/building society statements/summary, dated within the last **3** months including account number and sort code, as verifiable (**accept internet printed**)
- Mortgage statement, (dated within the last **3** months) (**accept internet printed**)
- Utility bill (such as electricity, gas, landline, satellite TV or water bill dated within the last **3** months (**accept internet printed**))
- Local authority council tax bill (for the current council tax year)
- Local/State Benefit Letter within the last **12** months
- Her Majesty's Revenue and Customs (HMRC) notification dated within the last **12** months
- Royal Mail – mail redirection confirmation within the last **3** months
- TV Licence within the last **12** months
- Letter from a Solicitors Regulatory Authority authorised Solicitor within the last **3** months
- Current tenancy agreement issued by a solicitor, Housing Association, Council or reputable letting agent.

Your information is being collected and processed by Countrywide. All information will be processed in accordance with the General Data Protection Regulation. Full details of how we process your information can be found on our website [countrywide.co.uk](https://countrywide.co.uk)

[countrywide.co.uk/notices/PrivacyNotice.pdf](https://countrywide.co.uk/notices/PrivacyNotice.pdf)

Printed copies of our privacy notice are available on request. If you need to discuss how your information is being processed, please contact us at [privacy@countrywide.co.uk](mailto:privacy@countrywide.co.uk)



# Inhale Capital. Our Knowledge. Your Trust

Looking to purchase property at auction  
but in need of quick and flexible financing?

Residential, semi-commercial & commercial property lending



No 'one size fits all' with each  
case **individually assessed**



Our approach is **straightforward**  
and **focused** on common sense  
lending principles

[www.inhalecapital.co.uk](http://www.inhalecapital.co.uk)

[enquiries@inhalecapital.co.uk](mailto:enquiries@inhalecapital.co.uk) 0161 515 3755



# Common Auction Conditions

## Common Auction Conditions (4th Edition 2018 – reproduced with the consent of the RICS).

The general conditions (including any extra general conditions) apply to the contract except to the extent that they are varied by special conditions or by an addendum.

### Introduction

The Common Auction Conditions are designed for real estate auctions, to set a consistent practice across the industry. There are three sections, all of which must be included without variation, except where stated:

#### Glossary

The glossary gives special meanings to certain words used in the conditions.

#### Auction Conduct Conditions

The Auction Conduct Conditions govern the relationship between the auctioneer and anyone who participates in the auction. They apply wherever the property is located, and cannot be changed without the auctioneer's agreement. We recommend that these conditions are set out in a two-part notice to bidders, part one containing advisory material – which auctioneers can tailor to their needs – and part two the auction conduct conditions and any extra auction conduct conditions.

#### Sale Conditions

The Sale Conditions apply only to property in England and Wales, and govern the agreement between each seller and buyer. They include general conditions of sale and template forms of special conditions of sale, tenancy and arrears schedules and a sale memorandum. They must not be used if other standard conditions apply.

### Glossary

This glossary applies to the AUCTION CONDUCT CONDITIONS and the SALE CONDITIONS. It is a compulsory section of the Common AUCTION Conditions that must be included without variation (but the SPECIAL CONDITIONS may include defined words that differ from the glossary so long as they apply only to the SPECIAL CONDITIONS).

The laws of England and Wales apply to the CONDITIONS and YOU, WE, the SELLER and the BUYER all submit to the jurisdiction of the Courts of England and Wales.

Wherever it makes sense:

- singular words can be read as plurals, and plurals as singular words;
- a "person" includes a corporate body;
- words of one gender include the other genders;
- references to legislation are to that legislation as it may have been modified or re-enacted by the date of the AUCTION or the CONTRACT DATE (as applicable); and
- where the following words appear in small capitals they have the specified meanings.

#### ACTUAL COMPLETION DATE

The date when COMPLETION takes place or is treated as taking place for the purposes of apportionment and calculating interest.

#### ADDENDUM

An amendment or addition to the CONDITIONS or to the PARTICULARS or to both whether contained in a supplement to the CATALOGUE, a written notice from the AUCTIONEERS or an oral announcement at the AUCTION.

#### Agreed COMPLETION DATE

Subject to CONDITION G9.3:

- a) the date specified in the SPECIAL CONDITIONS; or
- b) if no date is specified, 20 BUSINESS DAYS after the CONTRACT DATE;

but if that date is not a BUSINESS DAY the first subsequent BUSINESS DAY.

#### Approved Financial Institution

Any bank or building society that is regulated by a competent UK regulatory authority or is otherwise acceptable to the AUCTIONEERS.

#### ARREARS

ARREARS of rent and other sums due under the TENANCIES and still outstanding on the ACTUAL COMPLETION DATE.

#### ARREARS Schedule

The ARREARS schedule (if any) forming part of the SPECIAL CONDITIONS.

#### AUCTION

The AUCTION advertised in the CATALOGUE.

#### AUCTION CONDUCT CONDITIONS

The conditions so headed, including any extra AUCTION CONDUCT CONDITIONS.

#### AUCTIONEERS

The AUCTIONEERS at the AUCTION.

#### BUSINESS DAY

Any day except (a) Saturday or Sunday or (b) a bank or public holiday in England and Wales.

#### BUYER

The person who agrees to buy the LOT or, if applicable, that person's personal representatives: if two or more are jointly the BUYER their obligations can be enforced against them jointly or against each of them separately.

#### Catalogue

The catalogue for the AUCTION as it exists at the date of the AUCTION (or, if the catalogue is then different, the date of the CONTRACT) including any ADDENDUM and whether printed or made available electronically.

#### COMPLETION

Unless the SELLER and the BUYER otherwise agree, the occasion when they have both complied with the obligations under the CONTRACT that they are obliged to comply with prior to COMPLETION, and the amount payable on COMPLETION has been unconditionally received in the SELLER'S conveyancer's client account (or as otherwise required by the terms of the CONTRACT).

#### Condition

One of the AUCTION CONDUCT CONDITIONS or SALE CONDITIONS.

#### CONTRACT

The CONTRACT by which the SELLER agrees to sell and the BUYER agrees to buy the LOT.

#### CONTRACT DATE

The date of the AUCTION or, if the LOT is sold before or after the AUCTION:

- a) the date of the SALE MEMORANDUM signed by both the SELLER and BUYER; or
- b) if CONTRACTs are exchanged, the date of exchange. If exchange is not effected in person or by an irrevocable agreement to exchange made by telephone, fax or electronic mail the date of exchange is the

date on which both parts have been signed and posted or otherwise placed beyond normal retrieval.

#### DOCUMENTS

DOCUMENTS of title including, if title is registered, the entries on the register and the title plan and other DOCUMENTS listed or referred to in the SPECIAL CONDITIONS relating to the LOT (apart from FINANCIAL CHARGES).

#### EXTRA GENERAL CONDITIONS

Any CONDITIONS added or varied by the AUCTIONEERS starting at CONDITION G30.

#### Financial Charge

A charge to secure a loan or other financial indebtedness (but not including a rentcharge or local land charge).

#### General Conditions

The SALE CONDITIONS headed 'GENERAL CONDITIONS OF SALE', including any EXTRA GENERAL CONDITIONS.

#### INTEREST RATE

If not specified in the SPECIAL CONDITIONS, the higher of 6% and 4% above the base rate from time to time of Barclays Bank plc. The INTEREST RATE will also apply to any judgment debt, unless the statutory rate is higher.

#### LOT

Each separate property described in the CATALOGUE or (as the case may be) the property that the SELLER has agreed to sell and the BUYER to buy (including chattels, if any).

#### Old ARREARS

ARREARS due under any of the TENANCIES that are not "new TENANCIES" as defined by the Landlord and Tenant (Covenants) Act 1995.

#### PARTICULARS

The section of the CATALOGUE that contains descriptions of each LOT (as varied by any ADDENDUM).

#### PRACTITIONER

An insolvency PRACTITIONER for the purposes of the Insolvency Act 1986 (or, in relation to jurisdictions outside the United Kingdom, a person undertaking a similar role).

#### PRICE

The PRICE (exclusive of VAT) that the BUYER agrees to pay for the LOT.

#### Ready To Complete

Ready, willing and able to complete: if COMPLETION would enable the SELLER to discharge all FINANCIAL CHARGES secured on the LOT that have to be discharged by COMPLETION, then those outstanding financial charges do not prevent the SELLER from being READY TO COMPLETE.

#### SALE CONDITIONS

The GENERAL CONDITIONS as varied by any SPECIAL CONDITIONS or ADDENDUM.

#### SALE MEMORANDUM

The form so headed (whether or not set out in the CATALOGUE) in which the terms of the CONTRACT for the sale of the LOT are recorded.

#### SELLER

The person selling the LOT. If two or more are jointly the SELLER their obligations can be enforced against them jointly or against each of them separately.

#### SPECIAL CONDITIONS

Those of the SALE CONDITIONS so headed that relate to the LOT.

#### TENANCIES

TENANCIES, leases, licences to occupy and agreements for lease and any DOCUMENTS varying or supplemental to them.

#### TENANCY SCHEDULE

The schedule of TENANCIES (if any) forming part of the SPECIAL CONDITIONS.

#### TRANSFER

TRANSFER includes a conveyance or assignment (and "to TRANSFER" includes "to convey" or "to assign").

#### TUPE

The TRANSFER of Undertakings (Protection of Employment) Regulations 2006.

#### VAT

Value Added Tax or other tax of a similar nature.

#### VAT OPTION

An option to tax.

#### WE (and US and OUR)

The AUCTIONEERS.

#### YOU (and YOUR)

Someone who has seen the CATALOGUE or who attends or bids at or otherwise participates in the AUCTION, whether or not a BUYER.

## Auction Conduct Conditions

Words in small capitals have the special meanings defined in the Glossary.

The AUCTION CONDUCT CONDITIONS (as supplemented or varied by CONDITION A6, if applicable) are a compulsory section of the Common AUCTION Conditions. They cannot be dispensed or varied without OUR agreement, even by a CONDITION purporting to replace the Common AUCTION Conditions in their entirety.

#### A1 Introduction

- A1.1 The AUCTION CONDUCT CONDITIONS apply wherever the LOT is located.
- A1.2 IF YOU make a bid for a LOT or otherwise participate in the AUCTION it is on the basis that YOU accept these AUCTION CONDUCT CONDITIONS. They govern OUR relationship with YOU. They can be varied only if WE agree.

#### A2 OUR role

- A2.1 As agents for each SELLER we have authority to
  - (a) prepare the CATALOGUE from information supplied by or on behalf of each SELLER;
  - (b) offer each LOT for sale;
  - (c) sell each LOT;
  - (d) receive and hold deposits;
  - (e) sign each SALE MEMORANDUM; and
  - (f) treat a CONTRACT as repudiated if the BUYER fails to sign a SALE MEMORANDUM or pay a deposit as required by

these AUCTION CONDUCT CONDITIONS or fails to provide identification as required by the AUCTIONEERS.

- A2.2 OUR decision on the conduct of the AUCTION is final.
- A2.3 WE may cancel the AUCTION, or alter the order in which LOTS are offered for sale. WE may also combine or divide LOTS. A LOT may be sold or withdrawn from sale prior to the AUCTION.
- A2.4 YOU acknowledge that to the extent permitted by law WE owe YOU no duty of care and YOU have no claim against US for any loss.
- A2.5 WE may refuse to admit one or more persons to the AUCTION without having to explain why.
- A2.6 YOU may not be allowed to bid unless YOU provide such evidence of YOUR identity and other information as WE reasonably require from all bidders.

#### A3 Bidding and reserve PRICES

- A3.1 All bids are to be made in pounds sterling exclusive of VAT.
- A3.2 WE may refuse to accept a bid. WE do not have to explain why.
- A3.3 If there is a dispute over bidding WE are entitled to resolve it, and OUR decision is final.
- A3.4 Unless stated otherwise each LOT is subject to a reserve PRICE (which may be fixed just before the LOT is offered for sale). If no bid equals or exceeds that reserve PRICE the LOT will be withdrawn from the AUCTION.
- A3.5 Where there is a reserve PRICE the SELLER may bid (or ask US or another agent to bid on the SELLER'S behalf) up to the reserve PRICE but may not make a bid equal to or exceeding the reserve PRICE. YOU accept that it is possible that all bids up to the reserve PRICE are bids made by or on behalf of the SELLER.

#### A4 The PARTICULARS and other information

- A4.1 WE have taken reasonable care to prepare PARTICULARS that correctly describe each LOT. THE PARTICULARS are based on information supplied by or on behalf of the SELLER. YOU need to check that the information in the PARTICULARS is correct.
- A4.2 If the SPECIAL CONDITIONS do not contain a description of the LOT, or simply refer to the relevant LOT number, you take the risk that the description contained in the PARTICULARS is incomplete or inaccurate, as the PARTICULARS have not been prepared by a conveyancer and are not intended to form part of a legal CONTRACT.
- A4.3 THE PARTICULARS and the SALE CONDITIONS may change prior to the AUCTION and it is YOUR responsibility to check that YOU have the correct versions.
- A4.4 IF WE provide information, or a copy of a DOCUMENT, WE do so only on the basis that WE are not responsible for the accuracy of that information or DOCUMENT.

#### A5 The CONTRACT

- A5.1 A successful bid is one WE accept as such (normally on the fall of the hammer). This CONDITION A5 applies to YOU only if YOU make the successful bid for a LOT.
- A5.2 YOU are obliged to buy the LOT on the terms of the SALE MEMORANDUM at the PRICE YOU bid (plus VAT, if applicable).
- A5.3 YOU must before leaving the AUCTION
  - (a) provide all information WE reasonably need from YOU to enable US to complete the SALE MEMORANDUM (including proof of your identity if required by US);
  - (b) sign the completed SALE MEMORANDUM; and
  - (c) pay the deposit.
- A5.4 If YOU do not WE may either
  - (a) as agent for the SELLER treat that failure as YOUR repudiation of the CONTRACT and offer the LOT for sale again: the SELLER may then have a claim against YOU for breach of CONTRACT; or
  - (b) sign the SALE MEMORANDUM on YOUR behalf.
- A5.5 The deposit
  - (a) must be paid in pounds sterling by cheque or by bankers' draft made payable to US (or, at OUR option, the SELLER'S conveyancer) drawn on an APPROVED FINANCIAL INSTITUTION (CONDITION A6 may state if WE accept any other form of payment);
  - (b) may be declined by US unless drawn on YOUR account, or that of the BUYER, or of another person who (we are satisfied) would not expose US to a breach of money laundering regulations;
  - (c) is to be held by US (or, at OUR option, the SELLER'S conveyancer); and
  - (d) is to be held as stakeholder where VAT would be chargeable on the deposit were it to be held as agent for the SELLER, but otherwise is to be held as stakeholder unless the SALE CONDITIONS require it to be held as agent for the SELLER.
- A5.6 WE may retain the SALE MEMORANDUM signed by or on behalf of the SELLER until the deposit has been received in cleared funds.
- A5.7 Where WE hold the deposit as stakeholder WE are authorised to release it (and interest on it if applicable) to the SELLER on COMPLETION or, if COMPLETION does not take place, to the person entitled to it under the SALE CONDITIONS.
- A5.8 If the BUYER does not comply with its obligations under the CONTRACT then
  - (a) YOU are personally liable to buy the LOT even if YOU are acting as an agent; and
  - (b) YOU must indemnify the SELLER in respect of any loss the SELLER incurs as a result of the BUYER'S default.
- A5.9 Where the BUYER is a company YOU warrant that the BUYER is properly constituted and able to buy the LOT.

#### A6 Extra Auction Conduct Conditions

- A6.1 Despite any SPECIAL CONDITION to the contrary the minimum deposit WE accept is £3,000.00 (or the total PRICE, if less). A SPECIAL CONDITION may, however, require a higher minimum deposit.

## General Conditions of Sale

Words in small capitals have the special meanings defined in the Glossary.

The GENERAL CONDITIONS (as WE supplement or change them by any EXTRA GENERAL CONDITIONS or ADDENDUM) are compulsory but may be dispensed or changed in relation to one or more LOTS by SPECIAL CONDITIONS. The template form of SALE MEMORANDUM is not compulsory but is to be varied only if WE agree. The template forms of SPECIAL CONDITIONS and schedules are recommended, but are not compulsory and may be changed by the SELLER of a LOT.

#### G1 The LOT

- G1.1 The LOT (including any rights to be granted or reserved, and any exclusions from it) is described in the SPECIAL

	CONDITIONS, or if not so described is that referred to in the SALE MEMORANDUM.		made to the Land Registry and of the DOCUMENTS accompanying that application;		(a) use all reasonable endeavours to obtain the licence at the SELLER'S expense; and
G1.2	The LOT is sold subject to any TENANCIES disclosed by the SPECIAL CONDITIONS, but otherwise with vacant possession on COMPLETION.		(ii) evidence that all applicable stamp duty land tax relating to that application has been paid; and		(b) enter into any Authorised Guarantee Agreement ("AGA") properly required (procuring a guarantee of that AGA if lawfully required by the landlord).
G1.3	The LOT is sold subject to all matters contained or referred to in the DOCUMENTS. The SELLER must discharge FINANCIAL CHARGES on or before COMPLETION.		(iii) a letter under which the SELLER or its conveyancer agrees to use all reasonable endeavours to answer any requisitions raised by the Land Registry and to instruct the Land Registry to send the completed registration DOCUMENTS to the BUYER.	G9.5	The BUYER must promptly
G1.4	The LOT is also sold subject to such of the following as may affect it, whether they arise before or after the CONTRACT DATE and whether or not they are disclosed by the SELLER or are apparent from inspection of the LOT or from the DOCUMENTS:		(d) The BUYER has no right to object to or make requisitions on any title information more than seven BUSINESS DAYS after that information has been given to the BUYER.	G9.6	(a) provide references and other relevant information; and
	(a) matters registered or capable of registration as local land charges;		G4.3 Unless otherwise stated in the SPECIAL CONDITIONS the SELLER sells with full title guarantee except that (and the TRANSFER shall so provide):		(b) comply with the landlord's lawful requirements.
	(b) matters registered or capable of registration by any competent authority or under the provisions of any statute;		(a) the covenant set out in section 3 of the Law of Property (Miscellaneous Provisions) Act 1994 shall not extend to matters recorded in registers open to public inspection; these are to be treated as within the actual knowledge of the BUYER; and		If within three months of the CONTRACT DATE (or such longer period as the SELLER and BUYER agree) the SELLER has not given licence notice to the BUYER the SELLER or the BUYER may (if not then in breach of any obligation under this CONDITION G9) by notice to the other terminate the CONTRACT at any time before the SELLER has given licence notice. That termination is without prejudice to the claims of either SELLER or BUYER for breach of this CONDITION G9.
	(c) notices, orders, demands, proposals and requirements of any competent authority;		(b) the covenant set out in section 4(1)(b) of the Law of Property (Miscellaneous Provisions) Act 1994 shall not extend to any condition or tenant's obligation relating to the state or condition of the LOT where the LOT is leasehold property.	G10	<b>Interest and apportionments</b>
	(d) charges, notices, orders, restrictions, agreements and other matters relating to town and country planning, highways or public health;		G4.4 The TRANSFER is to have effect as if expressly subject to all matters subject to which the LOT is sold under the CONTRACT.	G10.1	If the ACTUAL COMPLETION DATE is after the AGREED COMPLETION DATE for any reason other than the SELLER'S default the BUYER must pay interest at the INTEREST RATE on the money due from the BUYER at COMPLETION for the period starting on the AGREED COMPLETION DATE and ending on the ACTUAL COMPLETION DATE.
	(e) rights, easements, quasi-easements, and wayleaves;		G4.5 The SELLER does not have to produce, nor may the BUYER object to or make a requisition in relation to, any prior or superior title even if it is referred to in the DOCUMENTS.	G10.2	Subject to CONDITION G11 the SELLER is not obliged to apportion or account for any sum at COMPLETION unless the SELLER has received that sum in cleared funds. The SELLER must promptly pay to the BUYER after COMPLETION any sum to which the BUYER is entitled that the SELLER subsequently receives in cleared funds.
	(f) outgoing and other liabilities;		G4.6 The SELLER (and, if relevant, the BUYER) must produce to each other such confirmation of, or evidence of, their identity and that of their mortgagees and attorneys (if any) as is necessary for the other to be able to comply with applicable Money Laundering Regulations and Land Registry Rules.	G10.3	Income and outgoing are to be apportioned at the ACTUAL COMPLETION DATE unless:
G1.5	Where anything subject to which the LOT is sold would expose the SELLER to liability the BUYER is to comply with it and indemnify the SELLER against that liability.				(a) the BUYER is liable to pay interest; and
G1.6	The SELLER must notify the BUYER of any notices, orders, demands, proposals and requirements of any competent authority of which it learns after the CONTRACT DATE but the BUYER must comply with them and keep the SELLER indemnified.	G5	<b>TRANSFER</b>		(b) the SELLER has given notice to the BUYER at any time up to COMPLETION requiring apportionment on the date from which interest becomes payable by the BUYER;
G1.7	The LOT does not include any tenant's or trade fixtures or fittings. The SPECIAL CONDITIONS state whether any chattels are included in the LOT, but if they are:	G5.1	Unless a form of TRANSFER is prescribed by the SPECIAL CONDITIONS		in which event income and outgoing are to be apportioned on the date from which interest becomes payable by the BUYER.
	(a) the BUYER takes them as they are at COMPLETION and the SELLER is not liable if they are not fit for use, and		(a) the BUYER must supply a draft TRANSFER to the SELLER at least ten BUSINESS DAYS before the AGREED COMPLETION DATE and the engrossment (signed as a deed by the BUYER if CONDITION G5.2 applies) five BUSINESS DAYS before that date or (if later) two BUSINESS DAYS after the draft has been approved by the SELLER; and	G10.4	Apportionments are to be calculated on the basis that:
G1.8	(b) the SELLER is to leave them at the LOT.		(b) the SELLER must approve or revise the draft TRANSFER within five BUSINESS DAYS of receiving it from the BUYER.		(a) the SELLER receives income and is liable for outgoing for the whole of the day on which apportionment is to be made;
	The BUYER buys with full knowledge of		G5.2 If the SELLER has any liability (other than to the BUYER) in relation to the LOT or a TENANCY following COMPLETION, the BUYER is specifically to covenant in the TRANSFER to indemnify the SELLER against that liability.		(b) annual income and expenditure accrues at an equal daily rate assuming 365 days in a year (or 366 in a leap year), and income and expenditure relating to some other period accrues at an equal daily rate during the period to which it relates; and
	(a) the DOCUMENTS, whether or not the BUYER has read them; and		G5.3 The SELLER cannot be required to TRANSFER the LOT to anyone other than the BUYER, or by more than one TRANSFER.		(c) where the amount to be apportioned is not known at COMPLETION apportionment is to be made by reference to a reasonable estimate and further payment is to be made by SELLER or BUYER as appropriate within five BUSINESS DAYS of the date when the amount is known.
	(b) the physical condition of the LOT and what could reasonably be discovered on inspection of it, whether or not the BUYER has inspected it.		G5.4 Where the SPECIAL CONDITIONS state that the SELLER is to grant a new lease to the BUYER	G10.5	If a payment due from the BUYER to the SELLER on or after COMPLETION is not paid by the due date, the BUYER is to pay interest to the SELLER at the INTEREST RATE on that payment from the due date up to and including the date of payment.
G1.9	The BUYER admits that it is not relying on the information contained in the PARTICULARS or on any representations made by or on behalf of the SELLER but the BUYER may rely on the SELLER'S conveyancer's written replies to written enquiries to the extent stated in those replies.		(a) the CONDITIONS are to be read so that the TRANSFER refers to the new lease, the SELLER to the proposed landlord and the BUYER to the proposed tenant;	G11	<b>ARREARS</b>
G2	<b>Deposit</b>		(b) the form of new lease is that described by the SPECIAL CONDITIONS; and	Part 1 – Current rent	
G2.1	The amount of the deposit is the greater of:		(c) the SELLER is to produce, at least five BUSINESS DAYS before the AGREED COMPLETION DATE, the engrossed counterpart lease, which the BUYER is to sign and deliver to the SELLER on COMPLETION.	G11.1	"Current rent" means, in respect of each of the TENANCIES subject to which the LOT is sold, the instalment of rent and other sums payable by the tenant on the most recent rent payment date on or within four months preceding COMPLETION.
	(a) any minimum deposit stated in the AUCTION CONDUCT CONDITIONS (or the total PRICE, if this is less than that minimum); and			G11.2	If on COMPLETION there are any ARREARS of current rent the BUYER must pay them, whether or not details of those ARREARS are given in the SPECIAL CONDITIONS.
G2.2	(b) 10% of the PRICE (exclusive of any VAT on the PRICE).			G11.3	Parts 2 and 3 of this CONDITION G11 do not apply to ARREARS of current rent.
	If a cheque for all or part of the deposit is not cleared on first presentation the SELLER may treat the CONTRACT as at an end and bring a claim against the BUYER for breach of CONTRACT.	G6	<b>COMPLETION</b>	Part 2 – BUYER to pay for ARREARS	
G2.3	Interest earned on the deposit belongs to the SELLER unless the SALE CONDITIONS provide otherwise.	G6.1	COMPLETION is to take place at the offices of the SELLER'S conveyancer, or where the SELLER may reasonably require, on the AGREED COMPLETION DATE. The SELLER can only be required to complete on a BUSINESS DAY and between the hours of 0930 and 1700.	G11.4	Part 2 of this CONDITION G11 applies where the SPECIAL CONDITIONS give details of ARREARS.
G3	<b>Between CONTRACT and COMPLETION</b>		G6.2 The amount payable on COMPLETION is the balance of the PRICE adjusted to take account of apportionments plus (if applicable) VAT and interest, but no other amounts unless specified in the SPECIAL CONDITIONS.	G11.5	The BUYER is on COMPLETION to pay, in addition to any other money then due, an amount equal to all ARREARS of which details are set out in the SPECIAL CONDITIONS.
G3.1	From the CONTRACT DATE the SELLER has no obligation to insure the LOT and the BUYER bears all risks of loss or damage unless		G6.3 Payment is to be made in pounds sterling and only by	G11.6	If those ARREARS are not OLD ARREARS the SELLER is to assign to the BUYER all rights that the SELLER has to recover those ARREARS.
	(a) the LOT is sold subject to a TENANCY that requires the SELLER to insure the LOT or		(a) direct TRANSFER from the BUYER'S conveyancer to the SELLER'S conveyancer; and	Part 3 – BUYER not to pay for ARREARS	
	(b) the SPECIAL CONDITIONS require the SELLER to insure the LOT.		(b) the release of any deposit held by a stakeholder or in such other manner as the SELLER'S conveyancer may agree.	G11.7	Part 3 of this CONDITION G11 applies where the SPECIAL CONDITIONS
G3.2	If the SELLER is required to insure the LOT then the SELLER		G6.4 Unless the SELLER and the BUYER otherwise agree, COMPLETION cannot take place until both have complied with the obligations under the CONTRACT that they are obliged to comply with prior to COMPLETION, and the amount payable on COMPLETION is unconditionally received in the SELLER'S conveyancer's client account or as otherwise required by the terms of the CONTRACT.		(a) so state; or
	(a) must produce to the BUYER on request all relevant insurance details;		G6.5 If COMPLETION takes place after 1400 hours for a reason other than the SELLER'S default it is to be treated, for the purposes of apportionment and calculating interest, as if it had taken place on the next BUSINESS DAY.		(b) give no details of any ARREARS.
	(b) must use reasonable endeavours to maintain that or equivalent insurance and pay the premiums when due;		G6.6 Where applicable the CONTRACT remains in force following COMPLETION.	G11.8	While any ARREARS due to the SELLER remain unpaid the BUYER must:
	(c) gives no warranty as to the adequacy of the insurance;				(a) try to collect them in the ordinary course of management but need not take legal proceedings or forfeit the TENANCY;
	(d) must at the request of the BUYER use reasonable endeavours to have the BUYER'S interest noted on the policy if it does not cover a contracting purchaser;				(b) pay them to the SELLER within five BUSINESS DAYS of receipt in cleared funds (plus interest at the INTEREST RATE calculated on a daily basis for each subsequent day's delay in payment);
	(e) must, unless otherwise agreed, cancel the insurance at COMPLETION, apply for a refund of premium and (subject to the rights of any tenant or other third party) pay that refund to the BUYER; and				(c) on request, at the cost of the SELLER, assign to the SELLER or as the SELLER may direct the right to demand and sue for OLD ARREARS, such assignment to be in such form as the SELLER'S conveyancer may reasonably require;
	(f) (subject to the rights of any tenant or other third party) hold on trust for the BUYER any insurance payments that the SELLER receives in respect of loss or damage arising after the CONTRACT DATE, or assign to the BUYER the benefit of any claim;				(d) if reasonably required, allow the SELLER'S conveyancer to have on loan the counterpart of any TENANCY against an undertaking to hold it to the BUYER'S order;
	and the BUYER must on COMPLETION reimburse to the SELLER the cost of that insurance as from the CONTRACT DATE (to the extent not already paid by the BUYER or a tenant or other third party).				(e) not without the consent of the SELLER release any tenant or surety from liability to pay ARREARS or accept a surrender of or forfeit any TENANCY under which ARREARS are due; and
G3.3	No damage to or destruction of the LOT, nor any deterioration in its condition, however caused, entitles the BUYER to any reduction in PRICE, or to delay COMPLETION, or to refuse to complete.				(f) if the BUYER disposes of the LOT prior to recovery of all ARREARS obtain from the BUYER'S successor in title a covenant in favour of the SELLER in similar form to part 3 of this CONDITION G11.
G3.4	Section 47 of the Law of Property Act 1925 does not apply to the CONTRACT.			G11.9	Where the SELLER has the right to recover ARREARS it must not without the BUYER'S written consent bring insolvency proceedings against a tenant or seek the removal of goods from the LOT.
G3.5	Unless the BUYER is already lawfully in occupation of the LOT the BUYER has no right to enter into occupation prior to COMPLETION.			G12	<b>Management</b>
G4	<b>Title and identity</b>			G12.1	This CONDITION G12 applies where the LOT is sold subject to TENANCIES.
G4.1	Unless CONDITION G4.2 applies, the BUYER accepts the title of the SELLER to the LOT as at the CONTRACT DATE and may raise no requisition or objection to any of the DOCUMENTS that is made available before the AUCTION or any other matter, except one that occurs after the CONTRACT DATE.			G12.2	The SELLER is to manage the LOT in accordance with its standard management policies pending COMPLETION.
G4.2	The following provisions apply only to any of the following DOCUMENTS that is not made available before the AUCTION:			G12.3	The SELLER must consult the BUYER on all management issues that would affect the BUYER after COMPLETION (such as, but not limited to, an application for licence; a rent review; a variation, surrender, agreement to surrender or proposed forfeiture of a TENANCY; or a new TENANCY or agreement to grant a new TENANCY) and:
	(a) If the LOT is registered land the SELLER is to give to the BUYER within five BUSINESS DAYS of the CONTRACT DATE an official copy of the entries on the register and title plan and, where noted on the register, of all DOCUMENTS subject to which the LOT is being sold.				(a) the SELLER must comply with the BUYER'S reasonable requirements unless to do so would (but for the indemnity in paragraph (c)) expose the SELLER to a liability that the SELLER would not otherwise have, in which case the SELLER may act reasonably in such a way as to avoid that liability;
	(b) If the LOT is not registered land the SELLER is to give to the BUYER within five BUSINESS DAYS of the CONTRACT DATE an abstract or epitome of title starting from the root of title mentioned in the SPECIAL CONDITIONS (or, if none is mentioned, a good root of title more than fifteen years old) and must produce to the BUYER the original or an examined copy of every relevant DOCUMENT.				(b) if the SELLER gives the BUYER notice of the SELLER'S intended act and the BUYER does not object within five BUSINESS DAYS giving reasons for the objection the SELLER may act as the SELLER intends; and
	(c) If title is in the course of registration, title is to consist of:				(c) the BUYER is to indemnify the SELLER against all loss or liability the SELLER incurs through acting as the BUYER requires, or by reason of delay caused by the BUYER.
	(i) certified copies of the application for registration of title				



### G13 Rent deposits

- G13.1 Where any TENANCY is an assured shorthold TENANCY, the SELLER and the BUYER are to comply with their respective statutory duties in relation to the protection of tenants' deposits, and to demonstrate in writing to the other (before COMPLETION, so far as practicable) that they have complied.
- G13.2 The remainder of this CONDITION G13 applies where the SELLER is holding or otherwise entitled to money by way of rent deposit in respect of a TENANCY. In this CONDITION G13 "rent deposit deed" means the deed or other DOCUMENT under which the rent deposit is held.
- G13.3 If the rent deposit is not assignable the SELLER must on COMPLETION hold the rent deposit on trust for the BUYER and, subject to the terms of the rent deposit deed, comply at the cost of the BUYER with the BUYER's lawful instructions.
- G13.4 Otherwise the SELLER must on COMPLETION pay and assign its interest in the rent deposit to the BUYER under an assignment in which the BUYER covenants with the SELLER to:
- (a) observe and perform the SELLER's covenants and conditions in the rent deposit deed and indemnify the SELLER in respect of any breach;
  - (b) give notice of assignment to the tenant; and
  - (c) give such direct covenant to the tenant as may be required by the rent deposit deed.

### G14 VAT

- G14.1 Where a SALE CONDITION requires money to be paid or other consideration to be given, the payer must also pay any VAT that is chargeable on that money or consideration, but only if given a valid VAT invoice.
- G14.2 Where the SPECIAL CONDITIONS state that no VAT OPTION has been made the SELLER confirms that none has been made by it or by any company in the same VAT group nor will be prior to COMPLETION.

### G15 TRANSFER as a going concern

- G15.1 Where the SPECIAL CONDITIONS so state:
- (a) the SELLER and the BUYER intend, and will take all practicable steps (short of an appeal) to procure, that the sale is treated as a TRANSFER of a going concern; and
  - (b) this CONDITION G15 applies.
- G15.2 The SELLER confirms that the SELLER:
- (a) is registered for VAT, either in the SELLER's name or as a member of the same VAT group; and
  - (b) has (unless the sale is a standard-rated supply) made in relation to the LOT a VAT OPTION that remains valid and will not be revoked before COMPLETION.
- G15.3 The BUYER confirms that
- (a) it is registered for VAT, either in the BUYER'S name or as a member of a VAT group;
  - (b) it has made, or will make before COMPLETION, a VAT OPTION in relation to the LOT and will not revoke it before or within three months after COMPLETION;
  - (c) article 5(2B) of the Value Added Tax (Special Provisions) Order 1995 does not apply to it; and
  - (d) it is not buying the LOT as a nominee for another person.
- G15.4 The BUYER is to give to the SELLER as early as possible before the AGREED COMPLETION DATE evidence
- (a) of the BUYER'S VAT registration;
  - (b) that the BUYER has made a VAT OPTION; and
  - (c) that the VAT OPTION has been notified in writing to HM Revenue and Customs;
- and if it does not produce the relevant evidence at least two BUSINESS DAYS before the AGREED COMPLETION DATE, CONDITION G14.1 applies at COMPLETION.
- G15.5 The BUYER confirms that after COMPLETION the BUYER intends to
- (a) retain and manage the LOT for the BUYER'S own benefit as a continuing business as a going concern subject to and with the benefit of the TENANCIES; and
  - (b) collect the rents payable under the TENANCIES and charge VAT on them.
- G15.6 If, after COMPLETION, it is found that the sale of the LOT is not a TRANSFER of a going concern then:
- (a) the SELLER's conveyancer is to notify the BUYER's conveyancer of that finding and provide a VAT invoice in respect of the sale of the LOT;
  - (b) the BUYER must within five BUSINESS DAYS of receipt of the VAT invoice pay to the SELLER the VAT due; and
  - (c) if VAT is payable because the BUYER has not complied with this CONDITION G15, the BUYER must pay and indemnify the SELLER against all costs, interest, penalties or surcharges that the SELLER incurs as a result.

### G16 Capital allowances

- G16.1 This CONDITION G16 applies where the SPECIAL CONDITIONS state that there are capital allowances available in respect of the LOT.
- G16.2 The SELLER is promptly to supply to the BUYER all information reasonably required by the BUYER in connection with the BUYER's claim for capital allowances.
- G16.3 The value to be attributed to those items on which capital allowances may be claimed is set out in the SPECIAL CONDITIONS.
- G16.4 The SELLER and BUYER agree:
- (a) to make an election on COMPLETION under Section 198 of the Capital Allowances Act 2001 to give effect to this CONDITION G16; and
  - (b) to submit the value specified in the SPECIAL CONDITIONS to HM Revenue and Customs for the purposes of their respective capital allowance computations.

### G17 Maintenance agreements

- G17.1 The SELLER agrees to use reasonable endeavours to TRANSFER to the BUYER, at the BUYER'S cost, the benefit of the maintenance agreements specified in the SPECIAL CONDITIONS.
- G17.2 The BUYER must assume, and indemnify the SELLER in respect of, all liability under such agreements from the ACTUAL COMPLETION DATE.

### G18 Landlord and Tenant Act 1987

- G18.1 This CONDITION G18 applies where the sale is a relevant disposal for the purposes of part I of the Landlord and Tenant Act 1987.
- G18.2 The SELLER warrants that the SELLER has complied with sections 5B and 7 of that Act and that the requisite majority of qualifying tenants has not accepted the offer.

### G19 Sale by PRACTITIONER

- G19.1 This CONDITION G19 applies where the sale is by a PRACTITIONER either as SELLER or as agent of the SELLER.
- G19.2 The PRACTITIONER has been duly appointed and is empowered to sell the LOT.
- G19.3 Neither the PRACTITIONER nor the firm or any member of the firm to which the PRACTITIONER belongs has any personal liability in connection with the sale or the performance of the SELLER's obligations. The TRANSFER is to include a declaration excluding that personal liability.
- G19.4 The LOT is sold
- (a) in its condition at COMPLETION;
  - (b) for such title as the SELLER may have; and
  - (c) with no title guarantee;

and the BUYER has no right to terminate the CONTRACT or any other remedy if information provided about the LOT is inaccurate, incomplete or missing.

- G19.5 Where relevant:
- (a) the DOCUMENTS must include certified copies of those under which the PRACTITIONER is appointed, the DOCUMENT of appointment and the PRACTITIONER'S acceptance of appointment; and
  - (b) the SELLER may require the TRANSFER to be by the lender exercising its power of sale under the Law of Property Act 1925.
- G19.6 The BUYER understands this CONDITION G19 and agrees that it is fair in the circumstances of a sale by a PRACTITIONER.

### G20 TUPE

- G20.1 If the SPECIAL CONDITIONS state "there are no employees to which TUPE applies", this is a warranty by the SELLER to this effect.
- G20.2 If the SPECIAL CONDITIONS do not state "there are no employees to which TUPE applies" the following paragraphs apply:
- (a) The SELLER must notify the BUYER of those employees whose CONTRACTS of employment will TRANSFER to the BUYER on COMPLETION (the "Transferring Employees"). This notification must be given to the BUYER not less than 14 days before COMPLETION.
  - (b) The BUYER confirms that it will comply with its obligations under TUPE and any SPECIAL CONDITIONS in respect of the TRANSFERRING Employees.
  - (c) The BUYER and the SELLER acknowledge that pursuant and subject to TUPE, the CONTRACTS of employment between the TRANSFERRING Employees and the SELLER will TRANSFER to the BUYER on COMPLETION.
  - (d) The BUYER is to keep the SELLER indemnified against all liability for the TRANSFERRING Employees after COMPLETION.

### G21 Environmental

- G21.1 This CONDITION G21 only applies where the SPECIAL CONDITIONS so provide.
- G21.2 The SELLER has made available such reports as the SELLER has as to the environmental condition of the LOT and has given the BUYER the opportunity to carry out investigations (whether or not the BUYER has read those reports or carried out any investigation) and the BUYER admits that the PRICE takes into account the environmental condition of the LOT.
- G21.3 The BUYER agrees to indemnify the SELLER in respect of all liability for or resulting from the environmental condition of the LOT.

### G22 Service Charge

- G22.1 This CONDITION G22 applies where the LOT is sold subject to TENANCIES that include service charge provisions.
- G22.2 No apportionment is to be made at COMPLETION in respect of service charges.
- G22.3 Within two months after COMPLETION the SELLER must provide to the BUYER a detailed service charge account for the service charge year current on COMPLETION showing:
- (a) service charge expenditure attributable to each TENANCY;
  - (b) payments on account of service charge received from each tenant;
  - (c) any amounts due from a tenant that have not been received;
  - (d) any service charge expenditure that is not attributable to any TENANCY and is for that reason irrecoverable.
- G22.4 In respect of each TENANCY, if the service charge account shows:
- (a) that payments that the tenant has made on account exceed attributable service charge expenditure, the SELLER must pay to the BUYER an amount equal to that excess when it provides the service charge account; or
  - (b) that attributable service charge expenditure exceeds payments made on account, the BUYER must use all reasonable endeavours to recover the shortfall from the tenant as soon as practicable and promptly pay the amount so recovered to the SELLER;
- but in respect of payments on account that are still due from a tenant CONDITION G11 (ARREARS) applies.
- G22.5 In respect of service charge expenditure that is not attributable to any TENANCY the SELLER must pay the expenditure incurred in respect of the period before ACTUAL COMPLETION DATE and the BUYER must pay the expenditure incurred in respect of the period after ACTUAL COMPLETION DATE. Any necessary monetary adjustment is to be made within five BUSINESS DAYS of the SELLER providing the service charge account to the BUYER.
- G22.6 If the SELLER holds any reserve or sinking fund on account of future service charge expenditure or a depreciation fund:
- (a) the SELLER must pay it (including any interest earned on it) to the BUYER on COMPLETION; and
  - (b) the BUYER must covenant with the SELLER to hold it in accordance with the terms of the TENANCIES and to indemnify the SELLER if it does not do so.

### G23 Rent reviews

- G23.1 This CONDITION G23 applies where the LOT is sold subject to a TENANCY under which a rent review due on or before the ACTUAL COMPLETION DATE has not been agreed or determined.
- G23.2 The SELLER may continue negotiations or rent review proceedings up to the ACTUAL COMPLETION DATE but may not agree the level of the revised rent or commence rent review proceedings without the written consent of the BUYER, such consent not to be unreasonably withheld or delayed.
- G23.3 Following COMPLETION the BUYER must complete rent review negotiations or proceedings as soon as reasonably practicable but may not agree the level of the revised rent without the written consent of the SELLER, such consent not to be unreasonably withheld or delayed.
- G23.4 The SELLER must promptly:
- (a) give to the BUYER full details of all rent review negotiations and proceedings, including copies of all correspondence and other papers; and
  - (b) use all reasonable endeavours to substitute the BUYER for the SELLER in any rent review proceedings.
- G23.5 The SELLER and the BUYER are to keep each other informed of the progress of the rent review and have regard to any proposals the other makes in relation to it.
- G23.6 When the rent review has been agreed or determined the BUYER must account to the SELLER for any increased rent and interest recovered from the tenant that relates to the SELLER'S period of ownership within five BUSINESS DAYS of receipt of cleared funds.
- G23.7 If a rent review is agreed or determined before COMPLETION but the increased rent and any interest recoverable from the tenant has not been received by COMPLETION the increased rent and any interest recoverable is to be treated as ARREARS.
- G23.8 The SELLER and the BUYER are to bear their own costs in relation to rent review negotiations and proceedings.

### G24 TENANCY renewals

- G24.1 This CONDITION G24 applies where the tenant under a TENANCY has the right to remain in occupation under part II of the Landlord and Tenant Act 1954 (as amended) and references to notices and proceedings are to notices and proceedings under that Act.
- G24.2 Where practicable, without exposing the SELLER to liability or penalty, the SELLER must not without the written consent of the

BUYER (which the BUYER must not unreasonably withhold or delay) serve or respond to any notice or begin or continue any proceedings.

- G24.3 If the SELLER receives a notice the SELLER must send a copy to the BUYER within five BUSINESS DAYS and act as the BUYER reasonably directs in relation to it.
- G24.4 Following COMPLETION the BUYER must:
- (a) with the co-operation of the SELLER take immediate steps to substitute itself as a party to any proceedings;
  - (b) use all reasonable endeavours to conclude any proceedings or negotiations for the renewal of the TENANCY and the determination of any interim rent as soon as reasonably practicable at the best rent or rents reasonably obtainable; and
  - (c) if any increased rent is recovered from the tenant (whether as interim rent or under the renewed TENANCY) account to the SELLER for the part of that increase that relates to the SELLER'S period of ownership of the LOT within five BUSINESS DAYS of receipt of cleared funds.
- G24.5 The SELLER and the BUYER are to bear their own costs in relation to the renewal of the TENANCY and any proceedings relating to this.

### G25 Warranties

- G25.1 Available warranties are listed in the SPECIAL CONDITIONS.
- G25.2 Where a warranty is assignable the SELLER must:
- (a) on COMPLETION assign it to the BUYER and give notice of assignment to the person who gave the warranty; and
  - (b) apply for (and the SELLER and the BUYER must use all reasonable endeavours to obtain) any consent to assign that is required. If consent has not been obtained by COMPLETION the warranty must be assigned within five BUSINESS DAYS after the consent has been obtained.
- G25.3 If a warranty is not assignable the SELLER must after COMPLETION:
- (a) hold the warranty on trust for the BUYER; and
  - (b) at the BUYER'S cost comply with such of the lawful instructions of the BUYER in relation to the warranty as do not place the SELLER in breach of its terms or expose the SELLER to any liability or penalty.

### G26 No assignment

- The BUYER must not assign, mortgage or otherwise TRANSFER or part with the whole or any part of the BUYER'S interest under this CONTRACT.

### G27 Registration at the Land Registry

- G27.1 This CONDITION G27.1 applies where the LOT is leasehold and its sale either triggers first registration or is a registrable disposition. The BUYER must at its own expense and as soon as practicable:
- (a) procure that it becomes registered at the Land Registry as proprietor of the LOT;
  - (b) procure that all rights granted and reserved by the lease under which the LOT is held are properly noted against the affected titles; and
  - (c) provide the SELLER with an official copy of the register relating to such lease showing itself registered as proprietor.
- G27.2 This CONDITION G27.2 applies where the LOT comprises part of a registered title. The BUYER must at its own expense and as soon as practicable:
- (a) apply for registration of the TRANSFER;
  - (b) provide the SELLER with an official copy and title plan for the BUYER'S new title; and
  - (c) join in any representations the SELLER may properly make to the Land Registry relating to the application.

### G28 Notices and other communications

- G28.1 All communications, including notices, must be in writing. Communication to or by the SELLER or the BUYER may be given to or by their conveyancers.
- G28.2 A communication may be relied on if:
- (a) delivered by hand; or
  - (b) made electronically and personally acknowledged (automatic acknowledgement does not count); or
  - (c) there is proof that it was sent to the address of the person to whom it is to be given (as specified in the SALE MEMORANDUM) by a postal service that offers normally to deliver mail the next following BUSINESS DAY.
- G28.3 A communication is to be treated as received:
- (a) when delivered, if delivered by hand; or
  - (b) when personally acknowledged, if made electronically; but if delivered or made after 1700 hours on a BUSINESS DAY a communication is to be treated as received on the next BUSINESS DAY.
- G28.4 A communication sent by a postal service that offers normally to deliver mail the next following BUSINESS DAY will be treated as received on the second BUSINESS DAY after it has been posted.

### G29 CONTRACTS (Rights of Third Parties) Act 1999

No one is intended to have any benefit under the CONTRACT pursuant to the CONTRACTS (Rights of Third Parties) Act 1999.

### G30 EXTRA GENERAL CONDITIONS

Applicable for all lots where the Common Auction Conditions apply.

#### G30.1 The Deposit

- General Conditions A5.5a shall be deemed to be deleted and replaced by the following:
- A5.5a. The Deposit:
- (a) must be paid to the AUCTIONEERS by bankers draft drawn on a UK clearing bank or building society (or by such other means of payment as they may accept)
  - (b) is to be held as stakeholder save to the extent of the auctioneers' fees and expenses which part of the deposit shall be held as agents for the seller
  - (c) Where a deposit is paid to us as stakeholder we are at liberty to transfer all or part of it prior to completion to the Seller's solicitors (net of any fees and commission that will be due to us from the Seller) for them to hold as stakeholder in our place.

#### G30.2 Buyer's Administration Charge

Should your bid be successful you will be liable to pay a Buyer's Administration Charge of 1.35% of the purchase price plus VAT subject to a minimum fee of £1,800 plus VAT (unless stated otherwise within the property description in the catalogue) upon exchange of contracts to the Auctioneer.

#### G30.3 Extra Auction Conduct Conditions

Despite any special condition to the contrary the minimum deposit we accept is £3,000 (or the total price, if less). A special condition may, however, require a higher minimum deposit.

#### G30.4 Searches

On completion the Buyer shall pay to the Seller, in addition to the purchase price, the cost incurred by the Seller in obtaining the Searches included in the Auction Pack.

Working in partnership with



Auction Head Office  
2 Cotton Street  
Liverpool L3 7DY  
[auctions@countrywide.co.uk](mailto:auctions@countrywide.co.uk)

  
**Countrywide**  
Property Auctions