

LOT
4

3 Beacon View, Chapel Road, Foxhole, St. Austell, Cornwall PL26 7UG
*GUIDE PRICE £140,000+



A three bedroom, three reception semi detached house set on the fringes of Foxhole village in St. Austell.

DESCRIPTION

Now requiring some modernisation, this three bedroom semi-detached property offers a good amount of accommodation. The property is deceptively spacious and benefits from a generous sized rear garden and some outbuildings to the rear.

LOCATION

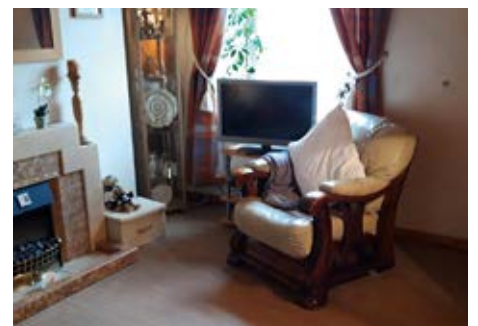
Foxhole village offers a primary school, fish and chip shop, village store, Post Office, medical centre and benefits from fantastic walks and scenery. The main town of St. Austell is known for a busy shopping precinct and is famed for the St. Austell Brewery and being within easy driving distance of The Eden Project.

ACCOMMODATION

Ground Floor Lounge, dining room, breakfast room, kitchen, utility room, bathroom and shower room.

First Floor Three bedrooms with the master benefitting from a wash room.

Outside To the front is off road parking for up to two vehicles. To the rear is a garden which is currently separated into two sections. The first section features a patio area and fence between both sides. The second section



houses a large storage shed, planting areas and leads to a stone built storage shed.

EPC

Energy Efficiency Rating – E

AUCTION VALUER

Lucy Fuller

VIEWING

Strictly by appointment only with Stratton Creber St. Austell 01726 73254. General enquiries Countrywide Property Auctions 01395 275691.

